

À des fins de recherche uniquement

# Anticorps Monoclonal anti-Dystrophin



Numéro de catalogue: 68120-1-Ig

## Informations de base

Numéro de catalogue: 68120-1-Ig	Numéro d'acquisition GenBank: BC028720	Méthode de purification: Purification par protéine A
Taille: 150ul , Concentration: 1000 µg/ml by Nanodrop;	Identification du gène (NCBI): 1756	CloneNo.: 1G12E6
Hôte: Mouse	Nom complet: dystrophin	Dilutions recommandées: WB 1:5000-1:50000 IHC 1:1000-1:4000 IF 1:200-1:800
Isotype: IgG2a	MW calculé: 3685 aa, 427 kDa	
Immunogen Catalog Number: AG4392	MW observés: 70 kDa, 430 kDa	

## Applications

Applications testées:  
FC, IF, IHC, WB, ELISA

Spécificité de l'espèce:  
Humain, rat, souris

**Remarque-IHC: il est suggéré de démasquer l'antigène avec un tampon de TE buffer pH 9,0; (\*) À défaut, 'le démasquage de l'antigène peut être effectué avec un tampon citrate pH 6,0.**

Contrôles positifs:

WB : tissu cérébral de rat, cellules HeLa, cellules HepG2, tissu cardiaque de rat, tissu cérébral de souris

IHC : tissu de muscle squelettique de rat, tissu de muscle squelettique de souris

IF : tissu de muscle squelettique de souris, tissu cardiaque de rat

## Informations générales

Dystrophin (DMD or BMD) is a large muscle protein whose mutations cause Duchenne muscular dystrophy (DMD) and Becker muscular dystrophy (BMD), the childhood neuromuscular disorders that result in progressive muscle weakness, respiratory difficulties and cardiovascular dysfunction. Dystrophin is a crucial component of the dystrophin-glycoprotein complex which is essential for muscle membrane integrity and stability. Dystrophin is located on the cytoplasmic face of the sarcolemma and connects the cytoskeletal network to the sarcolemma and extracellular matrix. Multiple isoforms of dystrophin exist due to the alternative splicing, with a wide range of MW (69-72, 110-143, 271, 426 kDa). Most tissues contain transcripts of several isoforms.

## Stockage

Stockage:  
Stocker à -20°C. Stable pendant un an après l'expédition.

Tampon de stockage:  
PBS avec azotate de sodium à 0,02 % et glycérol à 50 % pH 7,3  
L'aliquotage n'est pas nécessaire pour le stockage à -20C

\*\*\* Les 20ul contiennent 0,1% de BSA.

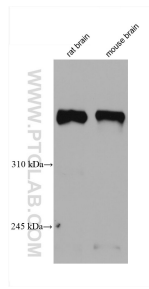
For technical support and original validation data for this product please contact:

T: 1 (888) 4PTGLAB (1-888-478-4522) (toll free  
in USA), or 1(312) 455-8498 (outside USA)

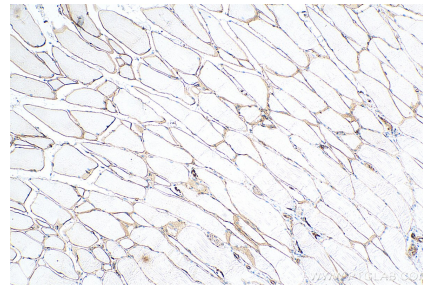
E: proteintech@ptglab.com  
W: ptglab.com

This product is exclusively available under Proteintech Group brand and is not available to purchase from any other manufacturer.

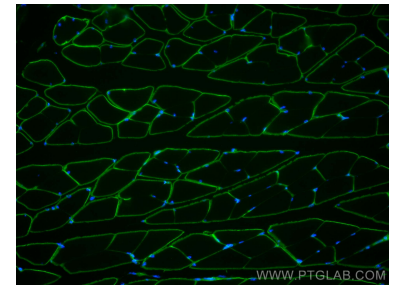
## Données de validation sélectionnées



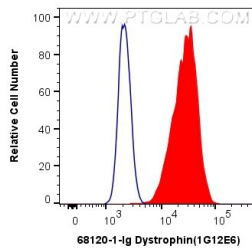
Various lysates were subjected to SDS PAGE followed by western blot with 68120-1-Ig (Dystrophin antibody) at dilution of 1:10000 incubated at room temperature for 1.5 hours.



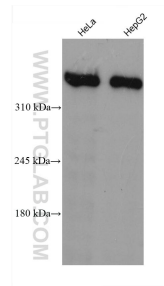
Immunohistochemical analysis of paraffin-embedded rat skeletal muscle tissue slide using 68120-1-Ig (Dystrophin antibody) at dilution of 1:2000 (under 10x lens). Heat mediated antigen retrieval with Tris-EDTA buffer (pH 9.0).



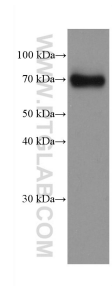
Immunofluorescent analysis of (4% PFA) fixed mouse skeletal muscle tissue using Dystrophin antibody (68120-1-Ig, Clone: 1G12E6) at dilution of 1:400 and CoraLite®488-Conjugated AffiniPure Goat Anti-Mouse IgG(H+L).



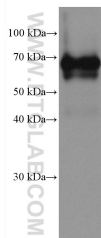
1X10<sup>6</sup> HepG2 cells were intracellularly stained with 0.4 ug Anti-Human Dystrophin (68120-1-Ig, Clone:1G12E6) and CoraLite®488-Conjugated AffiniPure Goat Anti-Mouse IgG(H+L) at dilution 1:1000 (red), or 0.4 ug Mouse IgG2a Isotype Control (C.1.18.4) (65208-1-Ig, Clone: C.1.18.4) (blue). Cells were fixed with 4% PFA and permeabilized with Flow Cytometry Perm Buffer (PF00011-C).



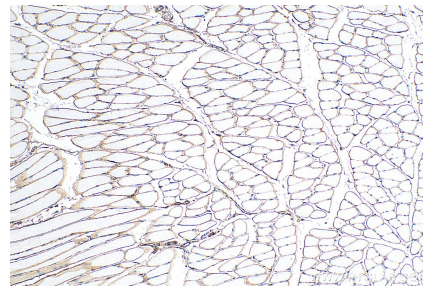
Various lysates were subjected to SDS PAGE followed by western blot with 68120-1-Ig (DMD antibody) at dilution of 1:10000 incubated at room temperature for 1.5 hours.



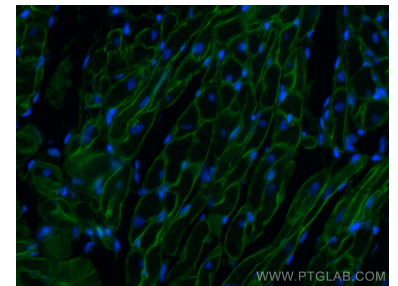
HeLa cells were subjected to SDS PAGE followed by western blot with 68120-1-Ig (Dystrophin antibody) at dilution of 1:10000 incubated at room temperature for 1.5 hours.



rat heart tissue were subjected to SDS PAGE followed by western blot with 68120-1-Ig (Dystrophin antibody) at dilution of 1:10000 incubated at room temperature for 1.5 hours.



Immunohistochemical analysis of paraffin-embedded mouse skeletal muscle tissue slide using 68120-1-Ig (Dystrophin antibody) at dilution of 1:2000 (under 10x lens). Heat mediated antigen retrieval with Tris-EDTA buffer (pH 9.0).



Immunofluorescent analysis of (4% PFA) fixed rat heart tissue using Dystrophin antibody (68120-1-Ig, Clone: 1G12E6) at dilution of 1:400 and CoraLite®488-Conjugated AffiniPure Goat Anti-Mouse IgG(H+L).