

À des fins de recherche uniquement

Anticorps Monoclonal anti-MAN1B1

Numéro de catalogue: 68121-1-Ig



Informations de base

Numéro de catalogue:	68121-1-Ig	Numéro d'acquisition GenBank:	BC002953	Méthode de purification:	Purification par protéine A
Taille:	150ul, Concentration: 1000 µg/ml by Nanodrop;	Identification du gène (NCBI):	11253	CloneNo.:	3C9F10
Hôte:	Mouse	Nom complet:	mannosidase, alpha, class 1B, member 1	Dilutions recommandées:	WB 1:1000-1:6000
Isotype:	IgG2b	MW calculé	80 kDa		
Immunogen Catalog Number:	AG28302	MW observés:	80 kDa		

Applications

Applications testées:
WB, ELISA
Spécificité de l'espèce:
Humain

Contrôles positifs:

WB : cellules HeLa, cellules HaCaT, cellules HEK-293, cellules HepG2, cellules LNCaP, cellules MCF-7, cellules MG U-87

Informations générales

MAN1B1, also known as ERMAN1, MANA-ER, belongs to the glycosyl hydrolase 47 family. MAN1B1 is involved in glycoprotein quality control targeting of misfolded glycoproteins for degradation, specifically converting Man9GlcNAc to Man8GlcNAc isomer B. At high enzyme concentrations, it further trims the carbohydrates to Man5-6GlcNAc2 (PMID: 18003979). Mutations in MAN1B1 cause autosomal-recessive intellectual disability. This gene has been associated with Rafiq syndrome (PMID: 21763484).

Stockage

Stockage:
Stocker à -20°C. Stable pendant un an après l'expédition.
Tampon de stockage:
PBS avec azoture de sodium à 0,02 % et glycérol à 50 % pH 7,3
L'aliquotage n'est pas nécessaire pour le stockage à -20C

*** Les 20ul contiennent 0,1% de BSA.

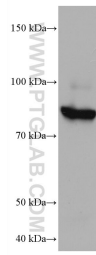
For technical support and original validation data for this product please contact:

T: 1 (888) 4PTGLAB (1-888-478-4522) (toll free in USA), or 1(312) 455-8498 (outside USA)

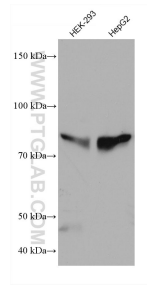
E: proteintech@ptglab.com
W: ptglab.com

This product is exclusively available under Proteintech Group brand and is not available to purchase from any other manufacturer.

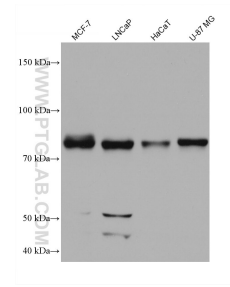
Données de validation sélectionnées



HeLa cells were subjected to SDS PAGE followed by western blot with 68121-1-Ig (MAN1B1 antibody) at dilution of 1:3000 incubated at room temperature for 1.5 hours.



Various lysates were subjected to SDS PAGE followed by western blot with 68121-1-Ig (MAN1B1 antibody) at dilution of 1:3000 incubated at room temperature for 1.5 hours.



Various lysates were subjected to SDS PAGE followed by western blot with 68121-1-Ig (MAN1B1 antibody) at dilution of 1:3000 incubated at room temperature for 1.5 hours.