

À des fins de recherche uniquement

Anticorps Monoclonal anti-PPP1CC

Numéro de catalogue: 68122-1-Ig



Informations de base

Numéro de catalogue: 68122-1-Ig	Numéro d'acquisition GenBank: BC014073	Méthode de purification: Purification par protéine A
Taille: 150ul , Concentration: 800 µg/ml by Nanodrop;	Identification du gène (NCBI): 5501	CloneNo.: 2G11C3
Hôte: Mouse	Nom complet: protein phosphatase 1, catalytic subunit, gamma isoform	Dilutions recommandées: WB 1:2000-1:16000 IF 1:400-1:1600
Isotype: IgG1	MW calculé 35 kDa	
Immunogen Catalog Number: AG32348	MW observés: 35kDa	

Applications

Applications testées:
IF, WB, ELISA

Spécificité de l'espèce:
Humain, rat, souris

Contrôles positifs:

WB : cellules LNCaP, cellules HEK-293, cellules HeLa, cellules HSC-T6, cellules Jurkat, cellules K-562, cellules NIH/3T3

IF : cellules HeLa, cellules C2C12

Informations générales

PPP1CC, also named as PP-1G, belongs to the PPP phosphatase family and PP-1 subfamily. Protein phosphatase 1 (PP1) is essential for cell division, and participates in the regulation of glycogen metabolism, muscle contractility and protein synthesis. It is involved in regulation of ionic conductances and long-term synaptic plasticity. PPP1CC may play an important role in dephosphorylating substrates such as the postsynaptic density-associated Ca²⁺/calmodulin dependent protein kinase II.

Stockage

Stockage:

Stocker à -20°C. Stable pendant un an après l'expédition.

Tampon de stockage:

PBS avec azoture de sodium à 0,02 % et glycérol à 50 % pH 7,3

L'aliquotage n'est pas nécessaire pour le stockage à -20C

***** Les 20ul contiennent 0,1% de BSA.**

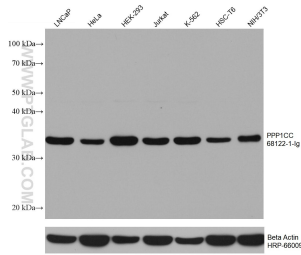
For technical support and original validation data for this product please contact:

T: 1 (888) 4PTGLAB (1-888-478-4522) (toll free in USA), or 1(312) 455-8498 (outside USA)

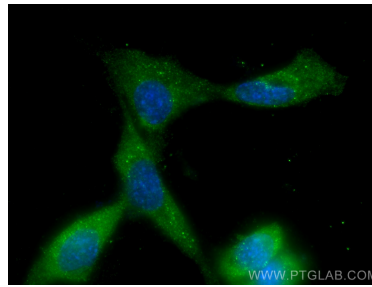
E: proteintech@ptglab.com
W: ptglab.com

This product is exclusively available under Proteintech Group brand and is not available to purchase from any other manufacturer.

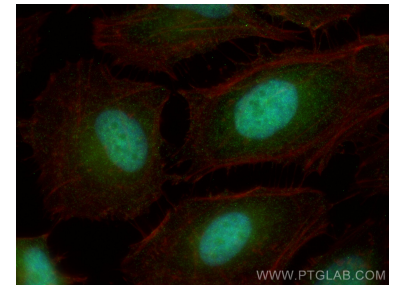
Données de validation sélectionnées



Various lysates were subjected to SDS PAGE followed by western blot with 68122-1-ig (PPP1CC antibody) at dilution of 1:8000 incubated at room temperature for 1.5 hours. The membrane was stripped and reblotted with HRP-conjugated Beta Actin Monoclonal antibody (HRP-66009) as loading control.



Immunofluorescent analysis of (-20°C Methanol) fixed C2C12 cells using PPP1CC antibody (68122-1-ig, Clone: 2G11C3) at dilution of 1:800 and CoraLite®488-Conjugated AffiniPure Goat Anti-Mouse IgG(H+L).



Immunofluorescent analysis of (4% PFA) fixed HeLa cells using PPP1CC antibody (68122-1-ig, Clone: 2G11C3) at dilution of 1:800 and CoraLite®488-Conjugated AffiniPure Goat Anti-Mouse IgG(H+L), CL594-Phalloidin (red).