

À des fins de recherche uniquement

# Anticorps Monoclonal anti-PIN1

Numéro de catalogue: 68127-1-Ig



## Informations de base

<b>Numéro de catalogue:</b> 68127-1-Ig	<b>Numéro d'acquisition GenBank:</b> BC002899	<b>Méthode de purification:</b> Purification par protéine G
<b>Taille:</b> 150ul , Concentration: 1000 µg/ml by Nanodrop;	<b>Identification du gène (NCBI):</b> 5300	<b>CloneNo.:</b> 1F4G3
<b>Hôte:</b> Mouse	<b>Nom complet:</b> peptidylprolyl cis/trans isomerase, NIMA-interacting 1	<b>Dilutions recommandées:</b> WB 1:5000-1:50000 IP 0.5-4.0 ug for IP and 1:1000-1:4000 for WB IF 1:200-1:800
<b>Isotype:</b> IgG1	<b>MW calculé:</b> 18 kDa	
<b>Immunogen Catalog Number:</b> AG0767	<b>MW observés:</b> 18 kDa	

## Applications

### Applications testées:

IF, IP, WB, ELISA

### Spécificité de l'espèce:

Humain, Lapin, porc, rat, souris

### Contrôles positifs:

WB : cellules HeLa, cellules Jurkat, cellules K-562, tissu cérébral de lapin, tissu cérébral de porc, tissu cérébral de rat, tissu cérébral de souris

IP : cellules HepG2,

IF : cellules NIH/3T3,

## Informations générales

PIN1 (Peptidyl-prolyl cis-trans isomerase NIMA-interacting 1) is essential for mitosis progression in yeast cells and is hypothesized to perform the same role in mammalian cells. It might regulate cellular processes distinct from the cell cycle itself, such as terminal differentiation through a modulation of differentiation-specific gene expression (PMID:20801874). It colocalizes with NEK6 in the nucleus. Pin1 inhibition simultaneously blocks multiple cancer pathways, disrupts the desmoplastic and immunosuppressive TME, and upregulates PD-L1 and ENT1, rendering pancreatic ductal adenocarcinoma (PDAC) eradicable by immunochemotherapy (PMID: 34388391).

## Stockage

### Stockage:

Stocker à -20°C. Stable pendant un an après l'expédition.

### Tampon de stockage:

PBS avec azoture de sodium à 0,02 % et glycérol à 50 % pH 7,3

L'aliquotage n'est pas nécessaire pour le stockage à -20C

\*\*\* Les 20ul contiennent 0,1% de BSA.

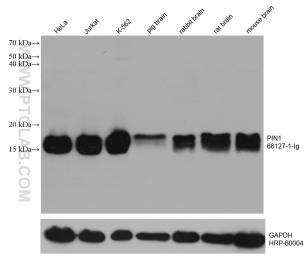
For technical support and original validation data for this product please contact:

T: 1 (888) 4PTGLAB (1-888-478-4522) (toll free in USA), or 1(312) 455-8498 (outside USA)

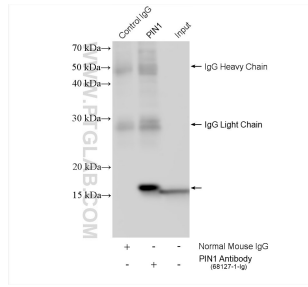
E: [proteintech@ptglab.com](mailto:proteintech@ptglab.com)  
W: [ptglab.com](http://ptglab.com)

This product is exclusively available under Proteintech Group brand and is not available to purchase from any other manufacturer.

## Données de validation sélectionnées



Various lysates were subjected to SDS PAGE followed by western blot with 68127-1-Ig (PIN1 antibody) at dilution of 1:10000 incubated at room temperature for 1.5 hours. The membrane was stripped and reblotted with HRP-conjugated GAPDH Monoclonal antibody (HRP-60004) as loading control.



IP result of anti-PIN1(IP:68127-1-Ig, 4ug; Detection:68127-1-Ig 1:2000) with HepG2 cells lysate 1920 ug.



Immunofluorescent analysis of (4% PFA) fixed NIH/3T3 cells using PIN1 antibody (68127-1-Ig, Clone: 1F4G3) at dilution of 1:400 and CoraLite®488-Conjugated AffiniPure Goat Anti-Mouse IgG(H+L), CL594-Phalloidin (red).