

À des fins de recherche uniquement

Anticorps Monoclonal anti-RYBP

Numéro de catalogue: 68130-1-Ig



Informations de base

Numéro de catalogue: 68130-1-Ig	Numéro d'acquisition GenBank: BC014959	Méthode de purification: Purification par protéine G
Taille: 150ul , Concentration: 1000 µg/ml by Nanodrop;	Identification du gène (NCBI): 23429	CloneNo.: 2C6G7
Hôte: Mouse	Nom complet: RING1 and YY1 binding protein	Dilutions recommandées: WB 1:5000-1:50000
Isotype: IgG1	MW calculé 228 aa, 25 kDa	
Immunogen Catalog Number: AG31715	MW observés: 32 kDa	

Applications

Applications testées:
WB, ELISA

Spécificité de l'espèce:
Humain, souris

Contrôles positifs:

WB : cellules A549, cellules Daudi, cellules HEK-293, cellules HeLa, cellules Jurkat, cellules LNCaP, cellules RAW 264.7, cellules U2OS

Informations générales

Polycomb repressive complexes (PRCs) are important chromatin regulators of embryonic stem (ES) cell function [PMID:22269950]. RYBP binds Polycomb H2A monoubiquitin ligases Ring1A and Ring1B and has been suggested to assist PRC localization to their targets. RYBP, firstly identified as a direct interactor with Ring1A, acts as transcriptional repressor in reporter assays, both in tissue culture cells and in the fly [PMID:16125914]

Stockage

Stockage:
Stocker à -20°C. Stable pendant un an après l'expédition.
Tampon de stockage:
PBS avec azoture de sodium à 0,02 % et glycérol à 50 % pH 7,3
L'aliquotage n'est pas nécessaire pour le stockage à -20C

***** Les 20ul contiennent 0,1% de BSA.**

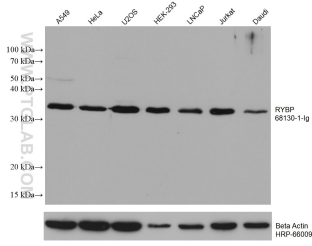
For technical support and original validation data for this product please contact:

T: 1 (888) 4PTGLAB (1-888-478-4522) (toll free
in USA), or 1(312) 455-8498 (outside USA)

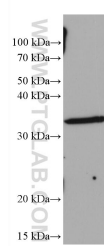
E: proteintech@ptglab.com
W: ptglab.com

This product is exclusively available under Proteintech Group brand and is not available to purchase from any other manufacturer.

Données de validation sélectionnées



Various lysates were subjected to SDS PAGE followed by western blot with 68130-1-Ig (RYBP antibody) at dilution of 1:20000 incubated at room temperature for 1.5 hours. The membrane was stripped and reblotted with HRP-conjugated Beta Actin Monoclonal antibody (HRP-66009) as loading control.



RAW 264.7 cells were subjected to SDS PAGE followed by western blot with 68130-1-Ig (RYBP antibody) at dilution of 1:20000 incubated at room temperature for 1.5 hours.