

À des fins de recherche uniquement

Anticorps Monoclonal anti-MYDGF/C19orf10



Numéro de catalogue: 68131-1-Ig

Informations de base

Numéro de catalogue: 68131-1-Ig	Numéro d'acquisition GenBank: BC010129	Méthode de purification: Purification par protéine G
Taille: 150ul, Concentration: 1000 µg/ml by Nanodrop;	Identification du gène (NCBI): 56005	CloneNo.: 1H8F4
Hôte: Mouse	Nom complet: chromosome 19 open reading frame 10	Dilutions recommandées: WB 1:5000-1:50000 IHC 1:500-1:2000
Isotype: IgG1	MW calculé 173 aa, 19 kDa	
Immunogen Catalog Number: AG13438	MW observés: 15-19 kDa	

Applications

Applications testées:

FC, IHC, WB, ELISA

Spécificité de l'espèce:

Humain, rat, souris

Remarque-IHC: il est suggéré de démasquer l'antigène avec un tampon de TE buffer pH 9,0; (*) À défaut, 'le démasquage de l'antigène peut être effectué avec un tampon citrate pH 6,0.

Contrôles positifs:

WB : cellules A549, cellules HeLa, cellules HepG2, cellules HSC-T6, cellules Jurkat, cellules K-562, cellules LNCaP, cellules NIH/3T3

IHC : tissu de cancer du foie humain,

Informations générales

Myeloid-derived growth factor (MYDGF), also named as chromosome 19 open reading frame 10 (C19orf10), is an FLS-derived protein that is secreted into the synovial fluid. MYDGF as a paracrine-acting protein secreted from monocytes/macrophages that improves tissue repair and heart function after myocardial infarction. MYDGF has been reported to regulate neutrophil motility in interstitial tissue damage (PMID: 34047769).

Stockage

Stockage:

Stocker à -20°C. Stable pendant un an après l'expédition.

Tampon de stockage:

PBS avec azoture de sodium à 0,02 % et glycérol à 50 % pH 7,3

L'aliquotage n'est pas nécessaire pour le stockage à -20C

*** Les 20ul contiennent 0,1% de BSA.

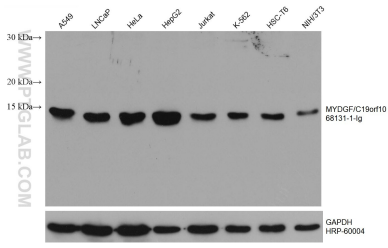
For technical support and original validation data for this product please contact:

T: 1 (888) 4PTGLAB (1-888-478-4522) (toll free in USA), or 1(312) 455-8498 (outside USA)

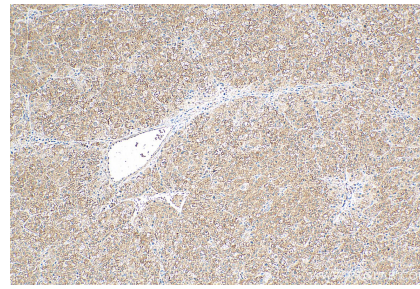
E: proteintech@ptglab.com
W: ptglab.com

This product is exclusively available under Proteintech Group brand and is not available to purchase from any other manufacturer.

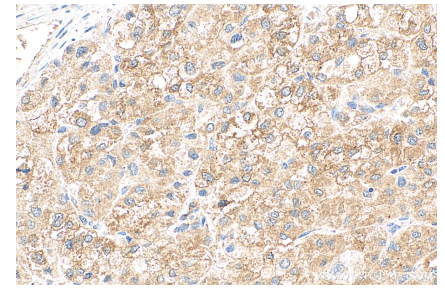
Données de validation sélectionnées



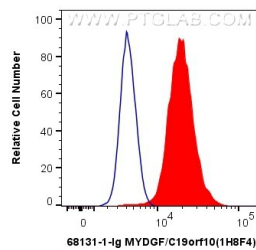
Various lysates were subjected to SDS PAGE followed by western blot with 68131-1-Ig (MYDGF/C19orf10 antibody) at dilution of 1:10000 incubated at room temperature for 1.5 hours. The membrane was stripped and reblotted with HRP-conjugated GAPDH Monoclonal antibody (HRP-60004) as loading control.



Immunohistochemical analysis of paraffin-embedded human liver cancer tissue slide using 68131-1-Ig (MYDGF/C19orf10 antibody) at dilution of 1:1000 (under 10x lens). Heat mediated antigen retrieval with Tris-EDTA buffer (pH 9.0).



Immunohistochemical analysis of paraffin-embedded human liver cancer tissue slide using 68131-1-Ig (MYDGF/C19orf10 antibody) at dilution of 1:1000 (under 40x lens). Heat mediated antigen retrieval with Tris-EDTA buffer (pH 9.0).



1X10⁶ HepG2 cells were intracellularly stained with 0.4 ug Anti-Human MYDGF/C19orf10 (68131-1-Ig, Clone:1H8F4) and CoraLite®488-Conjugated AffiniPure Goat Anti-Mouse IgG(H+L) at dilution 1:1000 (red), or 0.4 ug Mouse IgG1 Isotype Control (MOPC-21) (65124-1-Ig, Clone: MOPC-21) (blue). Cells were fixed with 4% PFA and permeabilized with Flow Cytometry Perm Buffer (PF00011-C).