

À des fins de recherche uniquement

# Anticorps Monoclonal anti-PLA2G4A

Numéro de catalogue: 68133-1-Ig



## Informations de base

Numéro de catalogue:	68133-1-Ig	Numéro d'acquisition GenBank:	BC114340	Méthode de purification:	Purification par protéine G
Taille:	150ul, Concentration: 1000 µg/ml by Nanodrop;	Identification du gène (NCBI):	5321	CloneNo.:	2D10H8
Hôte:	Mouse	Nom complet:	phospholipase A2, group IVA (cytosolic, calcium-dependent)	Dilutions recommandées:	WB 1:5000-1:50000 IHC 1:500-1:2000
Isotype:	IgG1	MW calculé:	749 aa, 85 kDa		
Immunogen Catalog Number:	AG32674	MW observés:	85-100 kDa		

## Applications

Applications testées:  
IHC, WB, ELISA

Spécificité de l'espèce:  
Humain

**Remarque-IHC: il est suggéré de démasquer l'antigène avec un tampon de TE buffer pH 9,0; (\*) À défaut, 'le démasquage de l'antigène peut être effectué avec un tampon citrate pH 6,0.**

Contrôles positifs:

WB : cellules HEK-293, cellules A549, cellules HeLa, cellules K-562, cellules NIH/3T3

IHC : tissu de cancer du poumon humain,

## Informations générales

### Stockage

Stockage:

Stocker à -20°C. Stable pendant un an après l'expédition.

Tampon de stockage:

PBS avec azoture de sodium à 0,02 % et glycérol à 50 % pH 7,3

L'aliquotage n'est pas nécessaire pour le stockage à -20C

\*\*\* Les 20ul contiennent 0,1% de BSA.

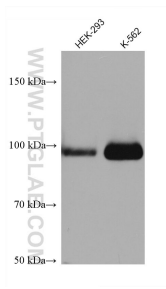
For technical support and original validation data for this product please contact:

T: 1 (888) 4PTGLAB (1-888-478-4522) (toll free in USA), or 1(312) 455-8498 (outside USA)

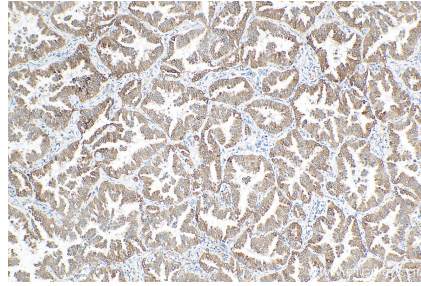
E: [proteintech@ptglab.com](mailto:proteintech@ptglab.com)  
W: [ptglab.com](http://ptglab.com)

This product is exclusively available under Proteintech Group brand and is not available to purchase from any other manufacturer.

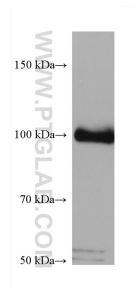
## Données de validation sélectionnées



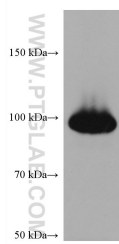
Various lysates were subjected to SDS PAGE followed by western blot with 68133-1-Ig (PLA2G4A antibody) at dilution of 1:10000 incubated at room temperature for 1.5 hours.



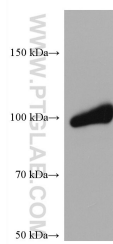
Immunohistochemical analysis of paraffin-embedded human lung cancer tissue slide using 68133-1-Ig (PLA2G4A antibody) at dilution of 1:1000 (under 10x lens). Heat mediated antigen retrieval with Tris-EDTA buffer (pH 9.0).



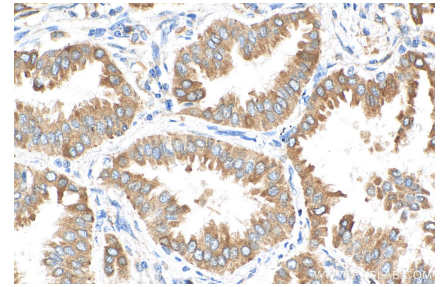
A549 cells were subjected to SDS PAGE followed by western blot with 68133-1-Ig (PLA2G4A antibody) at dilution of 1:10000 incubated at room temperature for 1.5 hours.



HeLa cells were subjected to SDS PAGE followed by western blot with 68133-1-Ig (PLA2G4A antibody) at dilution of 1:10000 incubated at room temperature for 1.5 hours.



NIH/3T3 cells were subjected to SDS PAGE followed by western blot with 68133-1-Ig (PLA2G4A antibody) at dilution of 1:10000 incubated at room temperature for 1.5 hours.



Immunohistochemical analysis of paraffin-embedded human lung cancer tissue slide using 68133-1-Ig (PLA2G4A antibody) at dilution of 1:1000 (under 40x lens). Heat mediated antigen retrieval with Tris-EDTA buffer (pH 9.0).