

À des fins de recherche uniquement

Anticorps Monoclonal anti-MYO1E

Numéro de catalogue: 68152-1-Ig



Informations de base

Numéro de catalogue:	68152-1-Ig	Numéro d'acquisition GenBank:	BC098392	Méthode de purification:	Purification par protéine G
Taille:	150ul, Concentration: 1000 µg/ml by Nanodrop;	Identification du gène (NCBI):	4643	CloneNo.:	2A12F5
Hôte:	Mouse	Nom complet:	myosin IE	Dilutions recommandées:	WB 1:5000-1:50000
Isotype:	IgG1	MW calculé:	1108 aa, 127 kDa		
Immunogen Catalog Number:	AG12244	MW observés:	120-150 kDa		

Applications

Applications testées:
WB, ELISA

Spécificité de l'espèce:
Humain, rat, souris

Contrôles positifs:

WB : cellules A549, cellules HEK-293, cellules HSC-T6, cellules Jurkat, cellules K-562, cellules LNCaP, cellules NIH/3T3

Informations générales

MYO1E, also named as Myosin-Ie and MYO1C (distinct from the MYO1C gene located on chromosome 17), encodes a member of the nonmuscle class I myosins which are a subgroup of the unconventional myosin protein family. The unconventional myosin proteins function as actin-based molecular motors. This protein localizes to the cytoplasm and may be involved in intracellular movement and membrane trafficking. Mutations in this gene are the cause of focal segmental glomerulosclerosis-6.

Stockage

Stockage:
Stocker à -20°C. Stable pendant un an après l'expédition.

Tampon de stockage:
PBS avec azoture de sodium à 0,02 % et glycérol à 50 % pH 7,3

L'aliquotage n'est pas nécessaire pour le stockage à -20C

*** Les 20ul contiennent 0,1% de BSA.

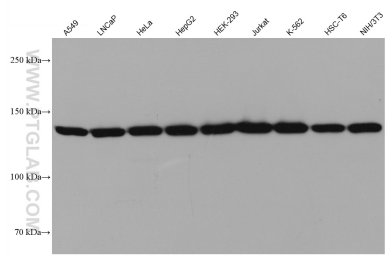
For technical support and original validation data for this product please contact:

T: 1 (888) 4PTGLAB (1-888-478-4522) (toll free in USA), or 1(312) 455-8498 (outside USA)

E: proteintech@ptglab.com
W: ptglab.com

This product is exclusively available under Proteintech Group brand and is not available to purchase from any other manufacturer.

Données de validation sélectionnées



Various lysates were subjected to SDS PAGE followed by western blot with 68152-1-Ig (MYO1E antibody) at dilution of 1:10000 incubated at room temperature for 1.5 hours.