

À des fins de recherche uniquement

Anticorps Monoclonal anti-ERBB2IP



Numéro de catalogue: 68159-1-Ig Phare

Informations de base

Numéro de catalogue:	68159-1-Ig	Numéro d'acquisition GenBank:	BC115012	Méthode de purification:	Purification par protéine A
Taille:	150ul, Concentration: 1000 µg/ml by Nanodrop;	Identification du gène (NCBI):	55914	CloneNo.:	1A8D4
Hôte:	Mouse	Nom complet:	erbb2 interacting protein	Dilutions recommandées:	WB 1:5000-1:50000
Isotype:	IgG1	MW calculé:	1412 aa, 158 kDa		
Immunogen Catalog Number:	AG18514	MW observés:	150-180 kDa		

Applications

Applications testées:
WB, ELISA

Spécificité de l'espèce:
Humain, rat, souris

Contrôles positifs:

WB : cellules U2OS, cellules A549, cellules HEK-293T, cellules HeLa, cellules HSC-T6, cellules Jurkat, cellules LNCaP, cellules MCF-7, cellules NIH/3T3

Informations générales

ERBB2IP is a cytoplasmic protein that contains leucine-rich repeats (LRR) and PSD95/Dlg1/zo-1 (PDZ) domain (thus named a LAP protein). ERBB2IP interacts, via its single PDZ domain, specifically with ErbB2, but not with ErbB3, ErbB4, or EGFR. It is colocalized with ErbB2 at the basolateral membranes of epithelial cells. In addition, ERBB2IP also interacts with PSD-95, Lano and with three p120-related catenins, eBPAG1 and the $\beta 4$ subunit of the $\alpha 6\beta 4$ integrin, two major components of hemidesmosomes. The molecular weight of ERBB2IP was predicted 150-180 kDa by Western Blot.(PMID: 25288731, PMID: 24252174, PMID: 19289088)

Stockage

Stockage:
Stocker à -20°C. Stable pendant un an après l'expédition.

Tampon de stockage:
PBS avec azoture de sodium à 0,02 % et glycérol à 50 % pH 7,3
L'aliquotage n'est pas nécessaire pour le stockage à -20C

***** Les 20ul contiennent 0,1% de BSA.**

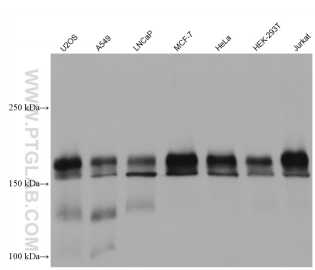
For technical support and original validation data for this product please contact:

T: 1 (888) 4PTGLAB (1-888-478-4522) (toll free in USA), or 1(312) 455-8498 (outside USA)

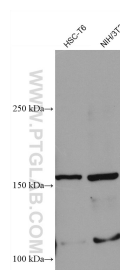
E: proteintech@ptglab.com
W: ptglab.com

This product is exclusively available under Proteintech Group brand and is not available to purchase from any other manufacturer.

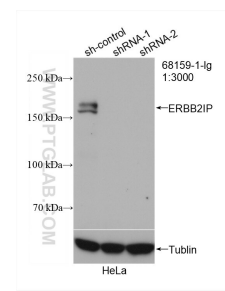
Données de validation sélectionnées



Various lysates were subjected to SDS PAGE followed by western blot with 68159-1-Ig (ERBB2IP antibody) at dilution of 1:10000 incubated at room temperature for 1.5 hours.



Various lysates were subjected to SDS PAGE followed by western blot with 68159-1-Ig (ERBB2IP antibody) at dilution of 1:10000 incubated at room temperature for 1.5 hours.



WB result of ERBB2IP antibody (68159-1-Ig; 1:3000; incubated at room temperature for 1.5 hours) with sh-Control and sh-ERBB2IP transfected HeLa cells.