

À des fins de recherche uniquement

Anticorps Monoclonal anti-LANCL1

Numéro de catalogue: 68160-1-Ig



Informations de base

Numéro de catalogue: 68160-1-Ig	Numéro d'acquisition GenBank: BC028685	Méthode de purification: Purification par protéine G
Taille: 150ul , Concentration: 1000 µg/ml by Nanodrop;	Identification du gène (NCBI): 10314	CloneNo.: 2H6E8
Hôte: Mouse	Nom complet: LanC lantibiotic synthetase component C-like 1 (bacterial)	Dilutions recommandées: WB 1:5000-1:50000 IP 0.5-4.0 ug for IP and 1:1000-1:4000 for WB
Isotype: IgG1	MW calculé 399 aa, 45 kDa	IF 1:400-1:1600
Immunogen Catalog Number: AG32665	MW observés: 40 kDa	

Applications

Applications testées:

IF, IP, WB, ELISA

Spécificité de l'espèce:

Humain, porc, rat, souris

Contrôles positifs:

WB : cellules HeLa, cellules HepG2, cellules HSC-T6, cellules K-562, cellules NIH/3T3, tissu cérébral de lapin, tissu cérébral de porc, tissu cérébral de rat, tissu cérébral de souris

IP : tissu cérébral de souris,

IF : cellules U-251,

Informations générales

LanCL1 (also known as P40 or GRP69A), is homologous to bacterial lanthionine synthetase C (LanC) family, which is involved in the biosynthesis of antimicrobial peptides (lantibiotics). LanCL1 was identified as a reduced glutathione (GSH)-binding protein and primarily expressed in neural tissues and testis.

Stockage

Stockage:

Stocker à -20°C. Stable pendant un an après l'expédition.

Tampon de stockage:

PBS avec azoture de sodium à 0,02 % et glycérol à 50 % pH 7,3

L'aliquotage n'est pas nécessaire pour le stockage à -20C

*** Les 20ul contiennent 0,1% de BSA.

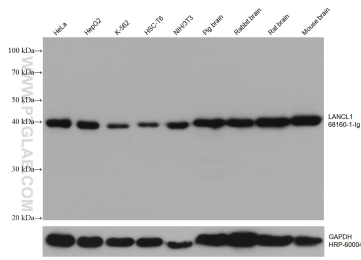
For technical support and original validation data for this product please contact:

T: 1 (888) 4PTGLAB (1-888-478-4522) (toll free in USA), or 1(312) 455-8498 (outside USA)

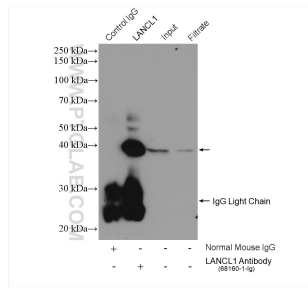
E: proteintech@ptglab.com
W: ptglab.com

This product is exclusively available under Proteintech Group brand and is not available to purchase from any other manufacturer.

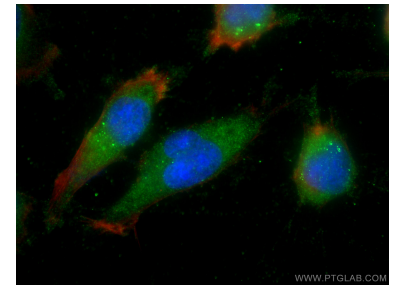
Données de validation sélectionnées



Various lysates were subjected to SDS PAGE followed by western blot with 68160-1-Ig (LANCL1 antibody) at dilution of 1:10000 incubated at room temperature for 1.5 hours. The membrane was stripped and reblotted with HRP-conjugated GAPDH Monoclonal antibody (HRP-60004) as loading control.



IP result of anti-LANCL1 (IP:68160-1-Ig, 5ug; Detection:68160-1-Ig 1:2000) with mouse brain tissue lysate 1600 ug.



Immunofluorescent analysis of (-20°C Ethanol) fixed U-251 cells using LANCL1 antibody (68160-1-Ig, Clone: 2H6E8) at dilution of 1:800 and CoraLite@488-Conjugated AffiniPure Goat Anti-Mouse IgG(H+L), CL594-Phalloidin (red).