

À des fins de recherche uniquement

Anticorps Monoclonal anti-TCEB1

Numéro de catalogue: 68164-1-Ig



Informations de base

Numéro de catalogue: 68164-1-Ig	Numéro d'acquisition GenBank: BC013809	Méthode de purification: Purification par protéine A
Taille: 150ul , Concentration: 1000 µg/ml by Nanodrop;	Identification du gène (NCBI): 6921	CloneNo.: 2D6D8
Hôte: Mouse	Nom complet: transcription elongation factor B (SIII),WB 1:5000-1:50000 polypeptide 1 (15kDa, elongin C)	Dilutions recommandées:
Isotype: IgG1	MW calculé 112 aa, 12 kDa	
Immunogen Catalog Number: AG22601	MW observés: 12 kDa	

Applications

Applications testées:
WB, ELISA

Spécificité de l'espèce:
Humain, rat, souris

Contrôles positifs:

WB : cellules LNCaP, cellules HSC-T6, cellules Jurkat,
cellules K-562, cellules NIH/3T3, tissu cérébral de rat,
tissu cérébral de souris

Informations générales

TCEB1, also named as RNA polymerase II transcription factor SIII subunit C, belongs to the SKP1 family. It mediates the ubiquitination of ECS-E3 ubiquitin-protein ligase complexes. TCEB1 is overexpressed in prostate cancer cell line PC-3 and breast cancer cell line SK-BR-3. TCEB1 also promotes invasion of prostate cancer cells (PMID:18844214).

Stockage

Stockage:
Stocker à -20°C. Stable pendant un an après l'expédition.
Tampon de stockage:
PBS avec azoture de sodium à 0,02 % et glycérol à 50 % pH 7,3
L'aliquotage n'est pas nécessaire pour le stockage à -20C

*** Les 20ul contiennent 0,1% de BSA.

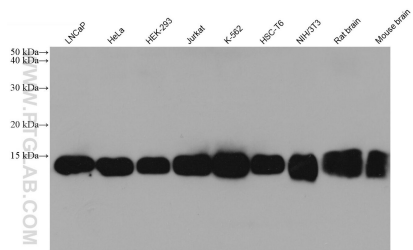
For technical support and original validation data for this product please contact:

T: 1 (888) 4PTGLAB (1-888-478-4522) (toll free
in USA), or 1(312) 455-8498 (outside USA)

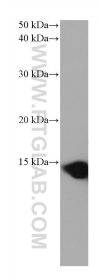
E: proteintech@ptglab.com
W: ptglab.com

This product is exclusively available under Proteintech Group brand and is not available to purchase from any other manufacturer.

Données de validation sélectionnées



Various lysates were subjected to SDS PAGE followed by western blot with 68164-1-Ig (TCEB1 antibody) at dilution of 1:10000 incubated at room temperature for 1.5 hours.



LNCaP cells were subjected to SDS PAGE followed by western blot with 68164-1-Ig (TCEB1 antibody) at dilution of 1:10000 incubated at room temperature for 1.5 hours.