

À des fins de recherche uniquement

Anticorps Monoclonal anti-GPD2

Numéro de catalogue: 68174-1-Ig



Informations de base

Numéro de catalogue: 68174-1-Ig	Numéro d'acquisition GenBank: BC019874	Méthode de purification: Purification par protéine G
Taille: 150ul , Concentration: 500 µg/ml by Nanodrop;	Identification du gène (NCBI): 2820	CloneNo.: 1C12E2
Hôte: Mouse	Nom complet: glycerol-3-phosphate dehydrogenase 2 (mitochondrial)	Dilutions recommandées:
Isotype: IgG1	MW calculé 41 kDa, 81 kDa	
Immunogen Catalog Number: AG11212		

Applications

Applications testées: WB, ELISA	Contrôles positifs:
Spécificité de l'espèce: Humain, rat, souris	WB : cellules LNCaP, cellules 4T1, cellules HeLa, cellules HSC-T6, cellules NIH/3T3

Informations générales

GPD2(Glycerol-3-phosphate dehydrogenase, mitochondrial) belongs to the FAD-dependent glycerol-3-phosphate dehydrogenase family. It is phosphorylated only in capacitated hamster spermatozoa and is noncanonically localized in the acrosome and principal piece in human, mouse, rat, and hamster spermatozoa, though in somatic cells it is localized in the mitochondria. This noncanonical localization may imply a role of GPD2 in acrosome reaction and hyperactivation(PMID:19333995).

Stockage

Stockage:
Stocker à -20°C. Stable pendant un an après l'expédition.
Tampon de stockage:
PBS avec azoture de sodium à 0,02 % et glycérol à 50 % pH 7,3
L'aliquotage n'est pas nécessaire pour le stockage à -20C

***** Les 20ul contiennent 0,1% de BSA.**

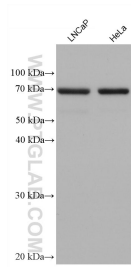
For technical support and original validation data for this product please contact:

T: 1 (888) 4PTGLAB (1-888-478-4522) (toll free
in USA), or 1(312) 455-8498 (outside USA)

E: proteintech@ptglab.com
W: ptglab.com

This product is exclusively available under Proteintech Group brand and is not available to purchase from any other manufacturer.

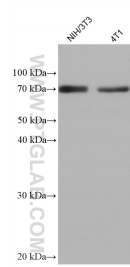
Données de validation sélectionnées



Various lysates were subjected to SDS PAGE followed by western blot with 68174-1-Ig (GPD2 antibody) at dilution of 1:10000 incubated at room temperature for 1.5 hours.



HSC-T6 cells were subjected to SDS PAGE followed by western blot with 68174-1-Ig (GPD2 antibody) at dilution of 1:10000 incubated at room temperature for 1.5 hours.



Various lysates were subjected to SDS PAGE followed by western blot with 68174-1-Ig (GPD2 antibody) at dilution of 1:10000 incubated at room temperature for 1.5 hours.