

À des fins de recherche uniquement

Anticorps Monoclonal anti-PPA1

Numéro de catalogue: 68178-1-Ig



Informations de base

Numéro de catalogue: 68178-1-Ig	Numéro d'acquisition GenBank: BC001022	Méthode de purification: Purification par protéine G
Taille: 150ul , Concentration: 500 µg/ml by Nanodrop;	Identification du gène (NCBI): 5464	CloneNo.: 1D11F4
Hôte: Mouse	Nom complet: pyrophosphatase (inorganic) 1	Dilutions recommandées: WB 1:5000-1:50000 IF 1:200-1:800
Isotype: IgG1	MW calculé 33 kDa	
Immunogen Catalog Number: AG7049	MW observés: 33 kDa	

Applications

Applications testées:
IF, WB, ELISA

Spécificité de l'espèce:
Humain, rat

Contrôles positifs:

WB : cellules LNCaP, cellules HEK-293, cellules HeLa,
cellules HepG2, cellules HSC-T6, cellules Jurkat,
cellules K-562

IF : cellules HeLa,

Informations générales

PPA1(Inorganic pyrophosphatase) is also named as IOPPP, PP and PPase. It maintains the thermodynamic favorability of these reactions by catalyzing the hydrolysis of pyrophosphates into organic phosphates, which are then exported across the cell membrane(PMID:16300924).The erythrocyte inorganic pyrophosphatase molecule would appear to be a dimer(PMID:4130389).

Stockage

Stockage:

Stocker à -20°C. Stable pendant un an après l'expédition.

Tampon de stockage:

PBS avec azoture de sodium à 0,02 % et glycérol à 50 % pH 7,3

L'aliquotage n'est pas nécessaire pour le stockage à -20C

*** Les 20ul contiennent 0,1% de BSA.

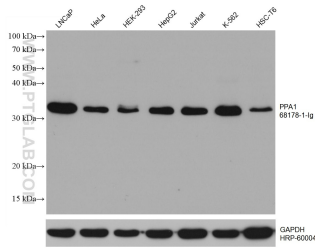
For technical support and original validation data for this product please contact:

T: 1 (888) 4PTGLAB (1-888-478-4522) (toll free
in USA), or 1(312) 455-8498 (outside USA)

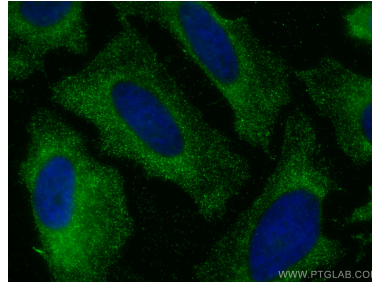
E: proteintech@ptglab.com
W: ptglab.com

This product is exclusively available under Proteintech Group brand and is not available to purchase from any other manufacturer.

Données de validation sélectionnées



Various lysates were subjected to SDS PAGE followed by western blot with 68178-1-Ig (PPA1 antibody) at dilution of 1:20000 incubated at room temperature for 1.5 hours. The membrane was stripped and reblotted with HRP-conjugated GAPDH Monoclonal antibody (HRP-60004) as loading control.



Immunofluorescent analysis of (-20°C Methanol) fixed HeLa cells using PPA1 antibody (68178-1-Ig, Clone: 1D1F4) at dilution of 1:400 and CoraLite®488-Conjugated AffiniPure Goat Anti-Mouse IgG(H+L).