

À des fins de recherche uniquement

Anticorps Monoclonal anti-ENOPH1

Numéro de catalogue: 68179-1-Ig



Informations de base

Numéro de catalogue:	68179-1-Ig	Numéro d'acquisition GenBank:	BC065815	Méthode de purification:	Purification par protéine G
Taille:	150ul , Concentration: 1000 µg/ml by Nanodrop;	Identification du gène (NCBI):	58478	CloneNo.:	1F1E11
Hôte:	Mouse	Nom complet:	enolase-phosphatase 1	Dilutions recommandées:	WB 1:5000-1:50000
Isotype:	IgG1	MW calculé:	261 aa, 29 kDa		
Immunogen Catalog Number:	AG12553	MW observés:	29-35 kDa		

Applications

Applications testées:
WB, ELISA

Spécificité de l'espèce:
Humain, Lapin, porc, rat, souris

Contrôles positifs:

WB : cellules LNCaP, cellules HeLa, cellules HepG2, cellules Jurkat, tissu cérébral de lapin, tissu cérébral de porc, tissu cérébral de rat, tissu cérébral de souris

Informations générales

ENOPH1, also named as MASA and MSTP145, belongs to the HAD-like hydrolase superfamily and MasA/MtnC family. ENOPH1 is a newly identified enzyme involved in L-methionine biosynthesis, which is associated with anxiety and depression. Studies have shown that ENOPH1 plays a crucial role in promoting the proliferation and migration of glioma cells (PMID: 32654229). ENOPH1 has 2 isoforms with the molecular mass of 13 and 29 kDa.

Stockage

Stockage:
Stocker à -20°C. Stable pendant un an après l'expédition.
Tampon de stockage:
PBS avec azoture de sodium à 0,02 % et glycérol à 50 % pH 7,3
L'aliquotage n'est pas nécessaire pour le stockage à -20C

*** Les 20ul contiennent 0,1% de BSA.

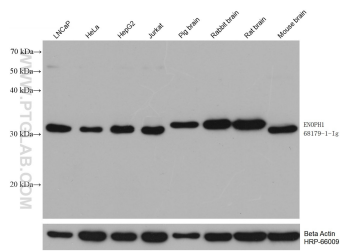
For technical support and original validation data for this product please contact:

T: 1 (888) 4PTGLAB (1-888-478-4522) (toll free in USA), or 1(312) 455-8498 (outside USA)

E: proteintech@ptglab.com
W: ptglab.com

This product is exclusively available under Proteintech Group brand and is not available to purchase from any other manufacturer.

Données de validation sélectionnées



Various lysates were subjected to SDS PAGE followed by western blot with 68179-1-Ig (ENOPH1 antibody) at dilution of 1:20000 incubated at room temperature for 1.5 hours. The membrane was stripped and reblotted with HRP-conjugated Beta Actin Monoclonal antibody (HRP-66009) as loading control.