

À des fins de recherche uniquement

# Anticorps Monoclonal anti-COMT

Numéro de catalogue: 68181-1-Ig



## Informations de base

<b>Numéro de catalogue:</b> 68181-1-Ig	<b>Numéro d'acquisition GenBank:</b> BC000419	<b>Méthode de purification:</b> Purification par protéine G
<b>Taille:</b> 150ul , Concentration: 1000 µg/ml by Nanodrop;	<b>Identification du gène (NCBI):</b> 1312	<b>CloneNo.:</b> 1A1A4
<b>Hôte:</b> Mouse	<b>Nom complet:</b> catechol-O-methyltransferase	<b>Dilutions recommandées:</b> WB 1:5000-1:50000 IF 1:200-1:800
<b>Isotype:</b> IgG1	<b>MW calculé</b> 30 kDa	
<b>Immunogen Catalog Number:</b> AG6502	<b>MW observés:</b> 28-30 kDa	

## Applications

### Applications testées:

FC, IF, WB, ELISA

### Spécificité de l'espèce:

Humain, porc, rat, souris

### Contrôles positifs:

**WB :** cellules HeLa, cellules HEK-293, cellules HepG2, cellules K-562, tissu de glande surrénale de porc, tissu testiculaire de rat, tissu testiculaire de souris, tissu testiculaire humain

**IF :** tissu de cervelet de souris,

## Informations générales

Catechol O-methyltransferase (COMT) is an important enzyme that catalyzes O-methylation and inactivation of metabolically active catechol-containing bioactive molecules and drugs. The mammalian COMT enzyme exists in soluble form (24-26 kDa) and membrane-bound form (28-30 kDa), which are encoded by a single gene utilizing different promoters.

## Stockage

### Stockage:

Stocker à -20°C. Stable pendant un an après l'expédition.

### Tampon de stockage:

PBS avec azoture de sodium à 0,02 % et glycérol à 50 % pH 7,3

L'aliquotage n'est pas nécessaire pour le stockage à -20C

**\*\*\* Les 20ul contiennent 0,1% de BSA.**

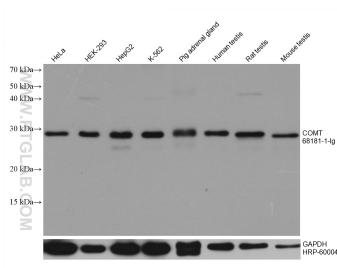
For technical support and original validation data for this product please contact:

T: 1 (888) 4PTGLAB (1-888-478-4522) (toll free in USA), or 1(312) 455-8498 (outside USA)

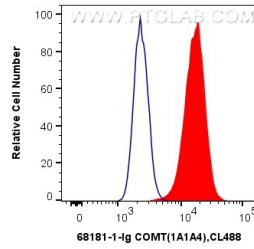
E: [proteintech@ptglab.com](mailto:proteintech@ptglab.com)  
W: [ptglab.com](http://ptglab.com)

**This product is exclusively available under Proteintech Group brand and is not available to purchase from any other manufacturer.**

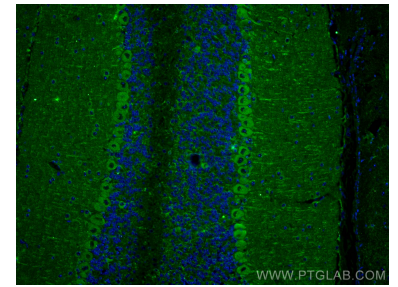
## Données de validation sélectionnées



Various lysates were subjected to SDS PAGE followed by western blot with 68181-1-Ig (COMT antibody) at dilution of 1:10000 and incubated at room temperature for 1.5 hours. The membrane was stripped and reblotted with HRP-conjugated GAPDH Monoclonal antibody (HRP-60004) as loading control.



$1 \times 10^6$  HepG2 cells were intracellularly stained with 0.4  $\mu$ g Anti-Human COMT (68181-1-Ig, Clone:1A1A4) and CoraLite@488-Conjugated AffiniPure Goat Anti-Mouse IgG(H+L) at dilution 1:1000 (red), or 0.4  $\mu$ g Control Antibody. Cells were fixed with 4% PFA and permeabilized with Flow Cytometry Perm Buffer (PF00011-C).



Immunofluorescent analysis of (4% PFA) fixed mouse cerebellum tissue using COMT antibody (68181-1-Ig, Clone: 1A1A4) at dilution of 1:400 and CoraLite@488-Conjugated AffiniPure Goat Anti-Mouse IgG(H+L).