

À des fins de recherche uniquement

# Anticorps Monoclonal anti-APPL1

Numéro de catalogue: 68195-1-Ig



## Informations de base

<b>Numéro de catalogue:</b> 68195-1-Ig	<b>Numéro d'acquisition GenBank:</b> BC028599	<b>Méthode de purification:</b> Purification par protéine A
<b>Taille:</b> 150ul, Concentration: 1000 µg/ml by Nanodrop;	<b>Identification du gène (NCBI):</b> 26060	<b>CloneNo.:</b> 1B7B11
<b>Hôte:</b> Mouse	<b>Nom complet:</b> adaptor protein, phosphotyrosine interaction, PH domain and leucine zipper containing 1	<b>Dilutions recommandées:</b> WB 1:5000-1:50000 IHC 1:200-1:800
<b>Isotype:</b> IgG2b	<b>MW calculé</b> 709 aa, 80 kDa	
<b>Immunogen Catalog Number:</b> AG3334	<b>MW observés:</b> 80 kDa	

## Applications

### Applications testées:

FC, IHC, WB, ELISA

### Spécificité de l'espèce:

Humain, Lapin, porc, rat, souris

**Remarque-IHC: il est suggéré de démasquer l'antigène avec un tampon de TE buffer pH 9,0; (\*) À défaut, le démasquage de l'antigène peut être effectué avec un tampon citrate pH 6,0.**

### Contrôles positifs:

**WB :** cellules LNCaP, cellules HEK-293, cellules HeLa, cellules HepG2, cellules Jurkat, tissu cardiaque de lapin, tissu cardiaque de porc, tissu cardiaque de rat

**IHC :** tissu de cancer du côlon humain,

## Informations générales

Adaptor protein, phosphotyrosine interaction, PH domain and leucine zipper containing 1 (APPL1), a binding partner of Akt2 and an important regulator of INS signaling, plays a key role in the regulation of INS secretion [PMID:22615370]. APPL1 interacts with adiponectin receptors and mediates the INS-sensitizing effects of adiponectin in muscle and endothelial cells. It also participates in nuclear signaling and transcriptional regulation, mostly by modulating the activity of various nuclear factors [PMID:22685329]. Apart from its role in endocytosis and endosomal transport, APPL1 was reported to undergo nucleocytoplasmic shuttling and participate in transcriptional regulation, e.g. by interactions with histone deacetylases (HDACs) [PMID:19686092].

## Stockage

### Stockage:

Stocker à -20°C. Stable pendant un an après l'expédition.

### Tampon de stockage:

PBS avec azoture de sodium à 0,02 % et glycérol à 50 % pH 7,3

L'aliquotage n'est pas nécessaire pour le stockage à -20C

**\*\*\* Les 20ul contiennent 0,1% de BSA.**

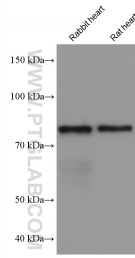
For technical support and original validation data for this product please contact:

T: 1 (888) 4PTGLAB (1-888-478-4522) (toll free in USA), or 1(312) 455-8498 (outside USA)

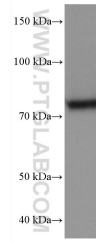
E: [proteintech@ptglab.com](mailto:proteintech@ptglab.com)  
W: [ptglab.com](http://ptglab.com)

**This product is exclusively available under Proteintech Group brand and is not available to purchase from any other manufacturer.**

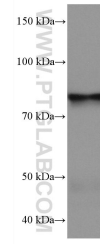
## Données de validation sélectionnées



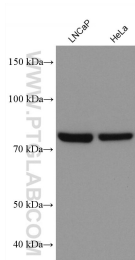
Various lysates were subjected to SDS PAGE followed by western blot with 68195-1-Ig (APPL1 antibody) at dilution of 1:20000 incubated at room temperature for 1.5 hours.



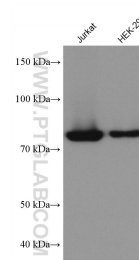
HepG2 cells were subjected to SDS PAGE followed by western blot with 68195-1-Ig (APPL1 antibody) at dilution of 1:20000 incubated at room temperature for 1.5 hours.



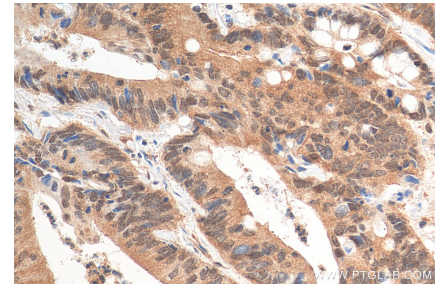
pig heart tissue were subjected to SDS PAGE followed by western blot with 68195-1-Ig (APPL1 antibody) at dilution of 1:20000 incubated at room temperature for 1.5 hours.



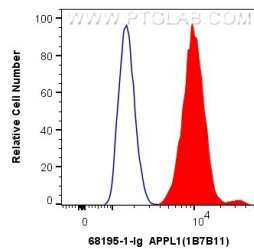
Various lysates were subjected to SDS PAGE followed by western blot with 68195-1-Ig (APPL1 antibody) at dilution of 1:20000 incubated at room temperature for 1.5 hours.



Various lysates were subjected to SDS PAGE followed by western blot with 68195-1-Ig (APPL1 antibody) at dilution of 1:20000 incubated at room temperature for 1.5 hours.



Immunohistochemical analysis of paraffin-embedded human colon cancer tissue slide using 68195-1-Ig (APPL1 antibody) at dilution of 1:400 (under 40x lens). Heat mediated antigen retrieval with Tris-EDTA buffer (pH 9.0).



1X10<sup>6</sup> HepG2 cells were intracellularly stained with 0.4 ug Anti-Human APPL1 (68195-1-Ig, Clone:1B7B11) and CoraLite®488-Conjugated AffiniPure Goat Anti-Mouse IgG(H+L) at dilution 1:1000 (red), or 0.4 ug Mouse IgG2b Isotype Control (MPC-11) (65128-1-Ig, Clone: MPC-11) (blue). Cells were fixed with 4% PFA and permeabilized with Flow Cytometry Perm Buffer (PF00011-C).