

À des fins de recherche uniquement

# Anticorps Monoclonal anti-SIRP Beta 1



Numéro de catalogue: 68206-1-Ig

## Informations de base

Numéro de catalogue: 68206-1-Ig	Numéro d'acquisition GenBank: BC025286	Méthode de purification: Purification par protéine G
Taille: 150ul , Concentration: 1000 µg/ml by Nanodrop;	Identification du gène (NCBI): 10326	CloneNo.: 3A3H1
Hôte: Mouse	Nom complet: signal-regulatory protein beta 1	Dilutions recommandées: WB 1:5000-1:50000
Isotype: IgG1	MW calculé 43 kDa	
Immunogen Catalog Number: AG28615	MW observés: 43 kDa	

## Applications

**Applications testées:**  
WB, ELISA

**Spécificité de l'espèce:**  
Humain, Lapin, porc, rat, souris

**Contrôles positifs:**  
WB : tissu de cervelet de rat, cellules U-937, tissu cérébral de lapin, tissu cérébral de porc, tissu cérébral de rat, tissu cérébral de souris, tissu de cervelet de lapin, tissu de cervelet de porc

## Informations générales

SIRP Beta 1 is a member of the signal-regulatory-protein (SIRP) family, and also belongs to the immunoglobulin superfamily. SIRP family members are cell surface signaling receptors differentially expressed in leukocytes and the central nervous system. SIRP Beta 1 interacts with TYROBP/DAP12, a protein bearing immunoreceptor tyrosine-based activation motifs. SIRP Beta 1 also participates in the recruitment of tyrosine kinase SYK.

## Stockage

**Stockage:**  
Stocker à -20°C. Stable pendant un an après l'expédition.

**Tampon de stockage:**  
PBS avec azoture de sodium à 0,02 % et glycérol à 50 % pH 7,3

L'aliquotage n'est pas nécessaire pour le stockage à -20C

\*\*\* Les 20ul contiennent 0,1% de BSA.

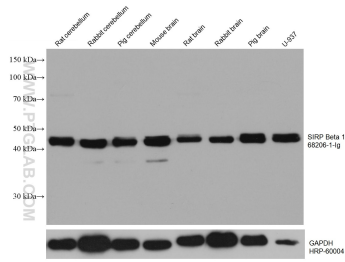
For technical support and original validation data for this product please contact:

T: 1 (888) 4PTGLAB (1-888-478-4522) (toll free in USA), or 1(312) 455-8498 (outside USA)

E: [proteintech@ptglab.com](mailto:proteintech@ptglab.com)  
W: [ptglab.com](http://ptglab.com)

This product is exclusively available under Proteintech Group brand and is not available to purchase from any other manufacturer.

## Données de validation sélectionnées



Various lysates were subjected to SDS PAGE followed by western blot with 68206-1-Ig (SIRP Beta 1 antibody) at dilution of 1:20000 incubated at room temperature for 1.5 hours. The membrane was stripped and reblotted with HRP-conjugated GAPDH Monoclonal antibody (HRP-60004) as loading control.