

À des fins de recherche uniquement

Anticorps Monoclonal anti-CAP1

Numéro de catalogue: 68207-1-Ig



Informations de base

Numéro de catalogue: 68207-1-Ig	Numéro d'acquisition GenBank: BC013963	Méthode de purification: Purification par protéine G
Taille: 150ul, Concentration: 1000 µg/ml by Nanodrop;	Identification du gène (NCBI): 10487	CloneNo.: 2H3A10
Hôte: Mouse	Nom complet: CAP, adenylate cyclase-associated protein 1 (yeast)	Dilutions recommandées: WB 1:5000-1:50000 IF 1:400-1:1600
Isotype: IgG1	MW calculé 475 aa, 52 kDa	
Immunogen Catalog Number: AG8876	MW observés: 52 kDa	

Applications

Applications testées:

IF, WB, ELISA

Spécificité de l'espèce:

Humain, Lapin, porc, rat, souris

Contrôles positifs:

WB : tissu testiculaire de souris, tissu placentaire humain, tissu pulmonaire de porc, tissu pulmonaire de rat, tissu pulmonaire de souris

IF : cellules HepG2, cellules HeLa

Informations générales

CAP1, also known as CAP, CAP1-PEN, belongs to the CAP family and contains 1 C-CAP/cofactor C-like domain. CAP1 binds to monomeric actin and regulates the actin cytoskeleton to control cell size, adhesion, and migration (PMID: 23737525). CAP1 also functions as a receptor for inflammatory cytokine resistin (PMID: 24606903). CAP1 is an abundant and ubiquitously expressed protein. Western blot analysis detected CAP1 at an apparent molecular mass of 52 kDa.

Stockage

Stockage:

Stocker à -20°C. Stable pendant un an après l'expédition.

Tampon de stockage:

PBS avec azoture de sodium à 0,02 % et glycérol à 50 % pH 7,3

L'aliquotage n'est pas nécessaire pour le stockage à -20C

*** Les 20ul contiennent 0,1% de BSA.

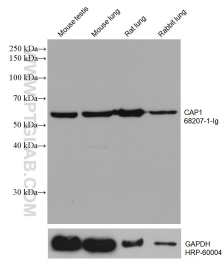
For technical support and original validation data for this product please contact:

T: 1 (888) 4PTGLAB (1-888-478-4522) (toll free
in USA), or 1(312) 455-8498 (outside USA)

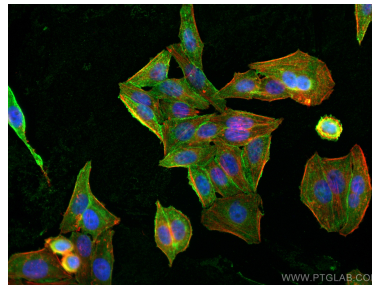
E: proteintech@ptglab.com
W: ptglab.com

This product is exclusively available under Proteintech Group brand and is not available to purchase from any other manufacturer.

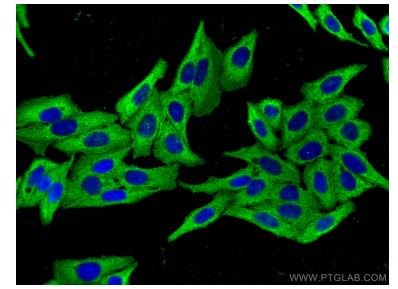
Données de validation sélectionnées



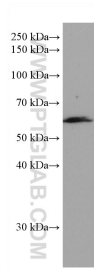
Various lysates were subjected to SDS PAGE followed by western blot with 68207-1-Ig (CAP1 antibody) at dilution of 1:20000 incubated at room temperature for 1.5 hours. The membrane was stripped and reblotted with HRP-conjugated GAPDH Monoclonal antibody (HRP-60004) as loading control.



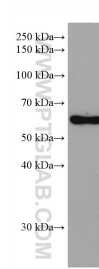
Immunofluorescent analysis of (4% PFA) fixed HepG2 cells using CAP1 antibody (68207-1-Ig, Clone: 2H3A10) at dilution of 1:800 and Coralite@488-Conjugated AffiniPure Goat Anti-Mouse IgG(H+L), CL594-Phalloidin (red).



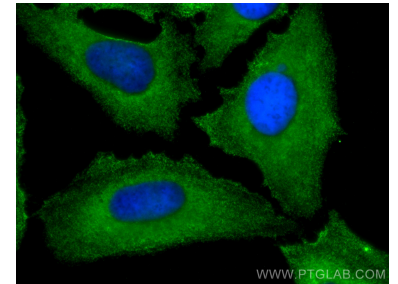
Immunofluorescent analysis of (-20°C Ethanol) fixed HepG2 cells using CAP1 antibody (68207-1-Ig, Clone: 2H3A10) at dilution of 1:800 and Coralite@488-Conjugated AffiniPure Goat Anti-Mouse IgG(H+L).



pig lung tissue were subjected to SDS PAGE followed by western blot with 68207-1-Ig (CAP1 antibody) at dilution of 1:20000 incubated at room temperature for 1.5 hours.



human placenta tissue were subjected to SDS PAGE followed by western blot with 68207-1-Ig (CAP1 antibody) at dilution of 1:20000 incubated at room temperature for 1.5 hours.



Immunofluorescent analysis of (-20°C Methanol) fixed HeLa cells using CAP1 antibody (68207-1-Ig, Clone: 2H3A10) at dilution of 1:400 and Coralite@488-Conjugated AffiniPure Goat Anti-Mouse IgG(H+L).