

À des fins de recherche uniquement

# Anticorps Monoclonal anti-Integrin alpha-1



Numéro de catalogue: 68211-1-Ig

## Informations de base

Numéro de catalogue: 68211-1-Ig	Numéro d'acquisition GenBank: BC137121	Méthode de purification: Purification par protéine A
Taille: 150ul, Concentration: 1000 µg/ml by Nanodrop;	Identification du gène (NCBI): 3672	CloneNo.: 1C4F2
Hôte: Mouse	Nom complet: integrin, alpha 1	Dilutions recommandées: WB 1:5000-1:50000
Isotype: IgG2a	MW calculé: 1179 aa, 131 kDa	
Immunogen Catalog Number: AG30631	MW observés: 180 kDa	

## Applications

Applications testées: WB, ELISA	Contrôles positifs: WB : cellules HepG2, tissu placentaire humain
Spécificité de l'espèce: Humain	

## Informations générales

The integrins are a superfamily of cell adhesion receptors that bind to extracellular matrix ligands, cell-surface ligands, and soluble ligands (PMID: 17543136). They are transmembrane  $\alpha\beta$  heterodimers and at least 24 distinct integrin heterodimers are formed by the combination of 18  $\alpha$  and eight  $\beta$  known subunits (PMID: 17543136; 20029421). In addition to mediating cell adhesion, integrins also play important roles in modulating signal transduction pathways that control cellular responses including migration, proliferation, differentiation, and apoptosis (PMID: 19118207). Integrin alpha-1 (ITGA1, CD49a) combines with the beta 1 subunit (ITGB1, CD29) to form a cell-surface receptor for collagen and laminin. This receptor is involved in cell-cell adhesion and may play a role in inflammation and fibrosis. Integrin alpha-1 is a transmembrane glycoprotein with an apparent molecular weight of 180-250 kDa, larger than the calculated molecular weight of 131 kDa (PMID: 2475259; 3257425; 11557277; 18840653).

## Stockage

Stockage:  
Stocker à -20°C. Stable pendant un an après l'expédition.  
Tampon de stockage:  
PBS avec azoture de sodium à 0,02 % et glycérol à 50 % pH 7,3  
L'aliquotage n'est pas nécessaire pour le stockage à -20C

\*\*\* Les 20ul contiennent 0,1% de BSA.

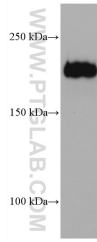
For technical support and original validation data for this product please contact:

T: 1 (888) 4PTGLAB (1-888-478-4522) (toll free  
in USA), or 1(312) 455-8498 (outside USA)

E: [proteintech@ptglab.com](mailto:proteintech@ptglab.com)  
W: [ptglab.com](http://ptglab.com)

This product is exclusively available under Proteintech Group brand and is not available to purchase from any other manufacturer.

## Données de validation sélectionnées



HepG2 cells were subjected to SDS PAGE followed by western blot with 68211-1-Ig (Integrin alpha-1 antibody) at dilution of 1:10000 incubated at room temperature for 1.5 hours.