

À des fins de recherche uniquement

Anticorps Monoclonal anti-CCT2

Numéro de catalogue: 68214-1-Ig **1 Publications**



Informations de base

Numéro de catalogue:	68214-1-Ig	Numéro d'acquisition GenBank:	BC113516	Méthode de purification:	Purification par protéine G
Taille:	150ul, Concentration: 1000 µg/ml by Nanodrop;	Identification du gène (NCBI):	10576	CloneNo.:	2H6C7
Hôte:	Mouse	Nom complet:	chaperonin containing TCP1, subunit 2 (beta)	Dilutions recommandées:	WB 1:5000-1:50000 IF 1:200-1:800
Isotype:	IgG1	MW calculé	535 aa, 57 kDa		
Immunogen Catalog Number:	AG19264	MW observés:	50-58 kDa		

Applications

Applications testées:

IF, WB, ELISA

Demandes citées:

WB

Spécificité de l'espèce:

Humain, Lapin, porc, rat, souris

Espèces citées:

souris

Contrôles positifs:

WB : cellules LNCaP, cellules HEK-293, cellules HeLa, cellules Jurkat, cellules K-562, tissu cérébral de lapin, tissu cérébral de porc, tissu cérébral de rat, tissu cérébral de souris

IF : cellules NIH/3T3,

Informations générales

CCT2 is a gene encoding a molecular chaperone that is a member of the chaperonin containing TCP1 complex (CCT), also known as the TCP1 ring complex (TRiC). The switch of CCT2's role from a chaperonin to a specific aggregophagy receptor is achieved by CCT2 monomer formation. CCT2 functions independently of ubiquitin and the TRiC complex to facilitate the autophagic clearance of solid protein aggregates. CCT2 has 2 isoforms with the molecular mass of 53 and 57 kDa. (PMID: 35699934)

Publications notables

Autrice	Pubmed ID	Journal	Application
Joshua Linnert	37427378	Front Cell Dev Biol	WB

Stockage

Stockage:

Stocker à -20°C. Stable pendant un an après l'expédition.

Tampon de stockage:

PBS avec azoture de sodium à 0,02 % et glycérol à 50 % pH 7,3

L'aliquotage n'est pas nécessaire pour le stockage à -20C

*** Les 20ul contiennent 0,1% de BSA.

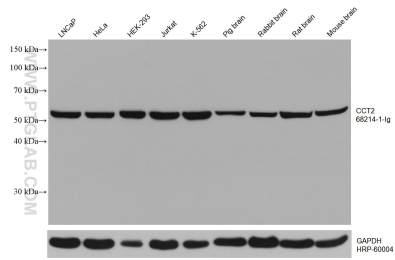
For technical support and original validation data for this product please contact:

T: 1 (888) 4PTGLAB (1-888-478-4522) (toll free in USA), or 1(312) 455-8498 (outside USA)

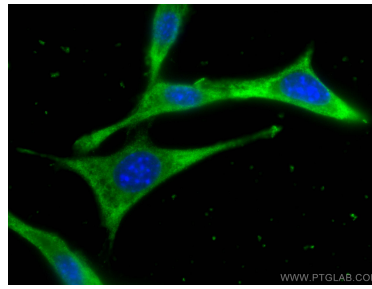
E: proteintech@ptglab.com
W: ptglab.com

This product is exclusively available under Proteintech Group brand and is not available to purchase from any other manufacturer.

Données de validation sélectionnées



Various lysates were subjected to SDS PAGE followed by western blot with 68214-1-ig (CCT2 antibody) at dilution of 1:20000 incubated at room temperature for 1.5 hours. The membrane was stripped and reblotted with HRP-conjugated GAPDH Monoclonal antibody (HRP-60004) as loading control.



Immunofluorescent analysis of (-20°C Ethanol) fixed NIH/3T3 cells using CCT2 antibody (68214-1-ig, Clone: 2H6C7) at dilution of 1:400 and CoraLite®488-Conjugated AffiniPure Goat Anti-Mouse IgG(H+L).