

À des fins de recherche uniquement

Anticorps Monoclonal anti-calcyphosine



Numéro de catalogue: 68225-1-Ig

Informations de base

Numéro de catalogue:	68225-1-Ig	Numéro d'acquisition GenBank:	BC080599	Méthode de purification:	Purification par protéine G
Taille:	150ul , Concentration: 1000 µg/ml by Nanodrop;	Identification du gène (NCBI):	828	CloneNo.:	2B7D1
Hôte:	Mouse	Nom complet:	calcyphosine	Dilutions recommandées:	WB 1:2000-1:10000
Isotype:	IgG1	MW calculé:	189 aa, 21 kDa		
Immunogen Catalog Number:	AG10330	MW observés:	21 kDa		

Applications

Applications testées:	WB, ELISA	Contrôles positifs:	WB : SK-BR-3 cells, cellules PC-3, cellules U-251, tissu pulmonaire de porc
Spécificité de l'espèce:	Humain, Lapin, porc		

Informations générales

calcyphosine is a calcium-binding protein, which may play a role in the regulation of ion transport. Calcyphosine (CAPS) was initially identified in the canine thyroid but has also been detected in humans and other mammals. CAPS synthesis is increased by thyroid-stimulating hormone and cAMP analogs that promote cell proliferation and maintain cell differentiation. Recently, CAPS was found to be involved in many kinds of tumor.

Stockage

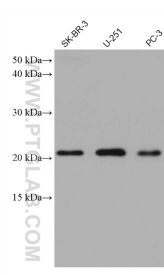
Stockage:
Stocker à -20°C. Stable pendant un an après l'expédition.
Tampon de stockage:
PBS avec azoture de sodium à 0,02 % et glycérol à 50 % pH 7,3
L'aliquotage n'est pas nécessaire pour le stockage à -20C

***** Les 20ul contiennent 0,1% de BSA.**

For technical support and original validation data for this product please contact:
T: 1 (888) 4PTGLAB (1-888-478-4522) (toll free in USA), or 1(312) 455-8498 (outside USA) E: proteintech@ptglab.com W: ptglab.com

This product is exclusively available under Proteintech Group brand and is not available to purchase from any other manufacturer.

Données de validation sélectionnées



Various lysates were subjected to SDS PAGE followed by western blot with 68225-1-Ig (CAPS antibody) at dilution of 1:5000 incubated at room temperature for 1.5 hours.