

À des fins de recherche uniquement

Anticorps Monoclonal anti-NKRF

Numéro de catalogue: 68230-1-Ig **Phare**



Informations de base

Numéro de catalogue: 68230-1-Ig	Numéro d'acquisition GenBank: BC068514	Méthode de purification: Purification par protéine G
Taille: 150ul, Concentration: 1000 µg/ml by Nanodrop;	Identification du gène (NCBI): 55922	CloneNo.: 1H10C8
Hôte: Mouse	Nom complet: NFkB repressing factor	Dilutions recommandées: WB 1:1000-1:6000
Isotype: IgG1	MW calculé: 78 kDa	
Immunogen Catalog Number: AG6374	MW observés: 100 kDa	

Applications

Applications testées:
WB, ELISA
Spécificité de l'espèce:
Humain, rat, souris

Contrôles positifs:

WB : cellules LNCaP, cellules HEK-293, cellules HeLa, cellules HSC-T6, cellules Jurkat, cellules K-562, cellules MCF-7, cellules NIH/3T3

Informations générales

NKRF, also named as Protein ITBA4 or Transcription factor NRF, is a 690 amino acid protein, which contains one G-patch domain and one R3H domain. NKRF is widely and constitutively expressed, with lower level in colon, peripheral blood lymphocytes, lung and kidney. NKRF interacts with a specific negative regulatory element (NRE) 5'-AATTCCTCTGA-3' to mediate transcriptional repression of certain NK-kappa-B responsive genes. NKRF is involved in the constitutive silencing of the IFN- β promoter, independently of the virus-induced signals, and in the inhibition of the basal and cytokine-induced iNOS promoter activity.

Stockage

Stockage:
Stocker à -20°C. Stable pendant un an après l'expédition.
Tampon de stockage:
PBS avec azoture de sodium à 0,02 % et glycérol à 50 % pH 7,3
L'aliquotage n'est pas nécessaire pour le stockage à -20C

*** Les 20ul contiennent 0,1% de BSA.

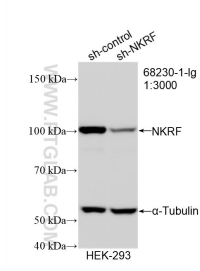
For technical support and original validation data for this product please contact:

T: 1 (888) 4PTGLAB (1-888-478-4522) (toll free in USA), or 1(312) 455-8498 (outside USA)

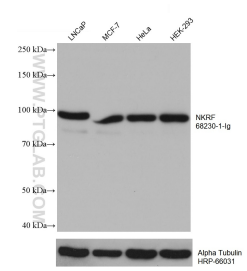
E: proteintech@ptglab.com
W: ptglab.com

This product is exclusively available under Proteintech Group brand and is not available to purchase from any other manufacturer.

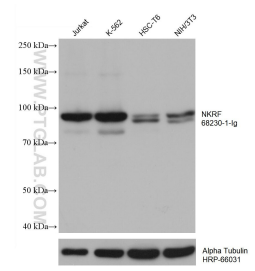
Données de validation sélectionnées



WB result of NKRF antibody (68230-1-Ig; 1:10000; incubated at room temperature for 1.5 hours) with sh-Control and sh-NKRF transfected HEK-293 cells.



Various lysates were subjected to SDS PAGE followed by western blot with 68230-1-Ig (NKRF antibody) at dilution of 1:3000 incubated at room temperature for 1.5 hours. The membrane was stripped and reblotted with HRP-conjugated Alpha Tubulin Monoclonal antibody (HRP-66031) as loading control.



Various lysates were subjected to SDS PAGE followed by western blot with 68230-1-Ig (NKRF antibody) at dilution of 1:3000 incubated at room temperature for 1.5 hours. The membrane was stripped and reblotted with HRP-conjugated Alpha Tubulin Monoclonal antibody (HRP-66031) as loading control.