

À des fins de recherche uniquement

Anticorps Monoclonal anti-ALDH2

Numéro de catalogue: 68237-1-Ig **Phare**



Informations de base

Numéro de catalogue:	68237-1-Ig	Numéro d'acquisition GenBank:	BC002967	Méthode de purification:	Purification par protéine A
Taille:	150ul , Concentration: 1000 µg/ml by Nanodrop;	Identification du gène (NCBI):	217	CloneNo.:	2G10F4
Hôte:	Mouse	Nom complet:	aldehyde dehydrogenase 2 family (mitochondrial)	Dilutions recommandées:	WB 1:5000-1:50000
Isotype:	IgG2a	MW calculé	56 kDa		
Immunogen Catalog Number:	AG7463	MW observés:	50-55 kDa		

Applications

Applications testées:
WB, ELISA

Spécificité de l'espèce:
Humain, Lapin, porc, rat, souris

Contrôles positifs:
WB : tissu hépatique de souris, tissu hépatique de lapin, tissu hépatique de rat

Informations générales

Acetaldehyde dehydrogenase is the next enzyme after alcohol dehydrogenase in the major pathway of alcohol metabolism. It mediates NADP+-dependent oxidation of aldehydes into acids during detoxification of alcohol-derived acetaldehyde; lipid peroxidation; and metabolism of corticosteroids, biogenic amines and neurotransmitters. Genetic variation in ALDH2 is responsible for individual differences in responses to drinking alcohol. Thus, the absence of this enzyme is linked to alcohol intolerance and a reduced risk for alcoholism-related liver disease.

Stockage

Stockage:
Stocker à -20°C. Stable pendant un an après l'expédition.

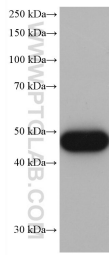
Tampon de stockage:
PBS avec azoture de sodium à 0,02 % et glycérol à 50 % pH 7,3
L'aliquotage n'est pas nécessaire pour le stockage à -20C

*** Les 20ul contiennent 0,1% de BSA.

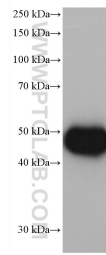
For technical support and original validation data for this product please contact:
T: 1 (888) 4PTGLAB (1-888-478-4522) (toll free in USA), or 1(312) 455-8498 (outside USA) E: proteintech@ptglab.com W: ptglab.com

This product is exclusively available under Proteintech Group brand and is not available to purchase from any other manufacturer.

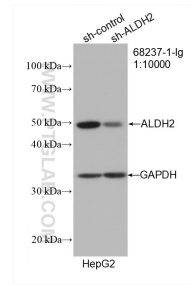
Données de validation sélectionnées



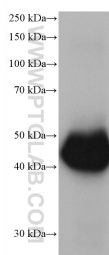
mouse liver tissue were subjected to SDS PAGE followed by western blot with 68237-1-Ig (ALDH2 antibody) at dilution of 1:20000 incubated at room temperature for 1.5 hours.



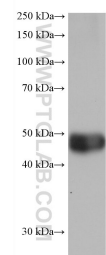
pig liver tissue were subjected to SDS PAGE followed by western blot with 68237-1-Ig (ALDH2 antibody) at dilution of 1:20000 incubated at room temperature for 1.5 hours.



WB result of ALDH2 antibody (68237-1-Ig; 1:10000; incubated at room temperature for 1.5 hours) with sh-Control and sh-ALDH2 transfected HepG2 cells.



rabbit liver tissue were subjected to SDS PAGE followed by western blot with 68237-1-Ig (ALDH2 antibody) at dilution of 1:20000 incubated at room temperature for 1.5 hours.



rat liver tissue were subjected to SDS PAGE followed by western blot with 68237-1-Ig (ALDH2 antibody) at dilution of 1:20000 incubated at room temperature for 1.5 hours.