

À des fins de recherche uniquement

# Anticorps Monoclonal anti-GLO1

Numéro de catalogue: 68242-1-Ig



## Informations de base

Numéro de catalogue: 68242-1-Ig	Numéro d'acquisition GenBank: BC001741	Méthode de purification: Purification par protéine A
Taille: 150ul, Concentration: 1000 µg/ml by Nanodrop;	Identification du gène (NCBI): 2739	CloneNo.: 1B7A8
Hôte: Mouse	Nom complet: glyoxalase I	Dilutions recommandées: WB 1:1000-1:6000
Isotype: IgG2a	MW calculé 21 kDa	
Immunogen Catalog Number: AG7314	MW observés: 21-25 kDa	

## Applications

Applications testées:  
WB, ELISA  
Spécificité de l'espèce:  
Humain, rat, souris

Contrôles positifs:

WB : cellules HEK-293, cellules HepG2, cellules HSC-T6, cellules Jurkat, cellules K-562, cellules LNCaP

## Informations générales

Glo1 (glyoxalase I) is a cytosolic protein expressed in all mammalian cells. Its physiological function is the detoxification of MG (methylglyoxal), which is a potent precursor of AGEs (advanced glycation end-products). Glo1 is known to play a role in many diseases including diabetes mellitus, Alzheimer's disease, and cancer.

## Stockage

Stockage:  
Stocker à -20°C. Stable pendant un an après l'expédition.  
Tampon de stockage:  
PBS avec azoture de sodium à 0,02 % et glycérol à 50 % pH 7,3  
L'aliquotage n'est pas nécessaire pour le stockage à -20C

**\*\*\* Les 20ul contiennent 0,1% de BSA.**

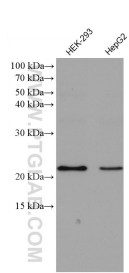
For technical support and original validation data for this product please contact:

T: 1 (888) 4PTGLAB (1-888-478-4522) (toll free  
in USA), or 1(312) 455-8498 (outside USA)

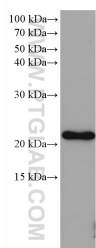
E: [proteintech@ptglab.com](mailto:proteintech@ptglab.com)  
W: [ptglab.com](http://ptglab.com)

This product is exclusively available under Proteintech Group brand and is not available to purchase from any other manufacturer.

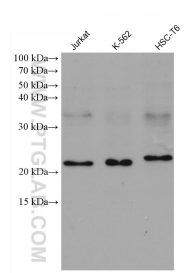
## Données de validation sélectionnées



Various lysates were subjected to SDS PAGE followed by western blot with 68242-1-Ig (GLO 1 antibody) at dilution of 1:3000 incubated at room temperature for 1.5 hours.



LNCaP cells were subjected to SDS PAGE followed by western blot with 68242-1-Ig (GLO 1 antibody) at dilution of 1:3000 incubated at room temperature for 1.5 hours.



Various lysates were subjected to SDS PAGE followed by western blot with 68242-1-Ig (GLO 1 antibody) at dilution of 1:3000 incubated at room temperature for 1.5 hours.