

À des fins de recherche uniquement

Anticorps Monoclonal anti-KLK8

Numéro de catalogue: 68247-1-Ig



Informations de base

Numéro de catalogue: 68247-1-Ig	Numéro d'acquisition GenBank: BC040887	Méthode de purification: Purification par protéine A
Taille: 150ul , Concentration: 1000 µg/ml by Nanodrop;	Identification du gène (NCBI): 11202	CloneNo.: 2F3A8
Hôte: Mouse	Nom complet: kallikrein-related peptidase 8	Dilutions recommandées: WB 1:5000-1:50000 IF 1:400-1:1600
Isotype: IgG2a	MW calculé 28 kDa	
Immunogen Catalog Number: AG5642	MW observés: 28 kDa	

Applications

Applications testées:
IF, WB, ELISA

Spécificité de l'espèce:
Humain

Contrôles positifs:

WB : cellules Jurkat, cellules A431, cellules EC109,
cellules MOLT-4

IF : cellules SH-SY5Y,

Informations générales

KLK8(Kallikrein-8) is also named as NRPN, PRSS19, TADG14. It is a new member of the human kallikrein family, which is predicted to be secreted and expected to be present in biological fluids (PMID:12507964). The protein is detectable in ovarian cancer tissue extracts, serum, and ascites fluid, indicating that it may serve as a new ovarian cancer marker (PMID:12782581). KLK8 has one predicted glycosylation site (PMID:20940292) and it has some isoforms produced by alternative splicing.

Stockage

Stockage:
Stocker à -20°C. Stable pendant un an après l'expédition.

Tampon de stockage:
PBS avec azoture de sodium à 0,02 % et glycérol à 50 % pH 7,3

L'aliquotage n'est pas nécessaire pour le stockage à -20C

*** Les 20ul contiennent 0,1% de BSA.

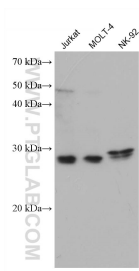
For technical support and original validation data for this product please contact:

T: 1 (888) 4PTGLAB (1-888-478-4522) (toll free
in USA), or 1(312) 455-8498 (outside USA)

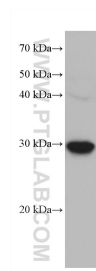
E: proteintech@ptglab.com
W: ptglab.com

This product is exclusively available under Proteintech Group brand and is not available to purchase from any other manufacturer.

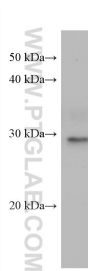
Données de validation sélectionnées



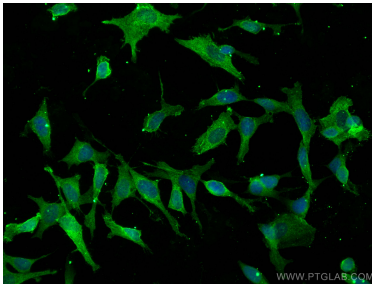
Various lysates were subjected to SDS PAGE followed by western blot with 68247-1-Ig (KLK8 antibody) at dilution of 1:10000 incubated at room temperature for 1.5 hours.



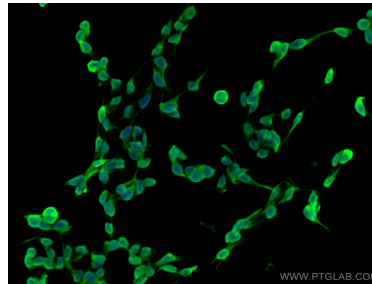
EC109 cells were subjected to SDS PAGE followed by western blot with 68247-1-Ig (KLK8 antibody) at dilution of 1:10000 incubated at room temperature for 1.5 hours.



A431 cells were subjected to SDS PAGE followed by western blot with 68247-1-Ig (KLK8 antibody) at dilution of 1:10000 incubated at room temperature for 1.5 hours.



Immunofluorescent analysis of (4% PFA) fixed SH-SY5Y cells using KLK8 antibody (68247-1-Ig, Clone: 2F3A8) at dilution of 1:800 and CoraLite®488-Conjugated AffiniPure Goat Anti-Mouse IgG(H+L).



Immunofluorescent analysis of (4% PFA) fixed SH-SY5Y cells using KLK8 antibody (68247-1-Ig, Clone: 2F3A8) at dilution of 1:800 and CoraLite®488-Conjugated AffiniPure Goat Anti-Mouse IgG(H+L).