

À des fins de recherche uniquement

# Anticorps Monoclonal anti-ABL1

Numéro de catalogue: 68254-1-Ig



## Informations de base

Numéro de catalogue: 68254-1-Ig	Numéro d'acquisition GenBank: NM_005157	Méthode de purification: Purification par protéine A
Taille: 150ul , Concentration: 1000 µg/ml by 25 Nanodrop;	Identification du gène (NCBI): 25	CloneNo.: 1E7A5
Hôte: Mouse	Nom complet: c-abl oncogene 1, receptor tyrosine kinase	Dilutions recommandées: WB 1:2000-1:10000 IF 1:400-1:1600
Isotype: IgG2b	MW calculé 123 kDa	
Immunogen Catalog Number: AG26152	MW observés: 140 kDa	

## Applications

### Applications testées:

FC, IF, WB, ELISA

### Spécificité de l'espèce:

Humain

### Contrôles positifs:

WB : cellules LNCaP, cellules HEK-293, cellules HeLa, cellules Jurkat, cellules K-562

IF : cellules U2OS, cellules HepG2, cellules MCF-7

## Informations générales

ABL1, also named as ABL, JTK7, c-ABL and p150, belongs to the protein kinase superfamily, Tyr protein kinase family and ABL subfamily. ABL1 regulates cytoskeleton remodeling during cell differentiation, cell division and cell adhesion. ABL1 localizes to dynamic actin structures, and phosphorylates CRK and CRKL, DOK1, and other proteins controlling cytoskeleton dynamics. It regulates DNA repair potentially by activating the proapoptotic pathway when the DNA damage is too severe to be repaired. ABL1 catalyze the reaction: ATP + a [protein]-L-tyrosine = ADP + a [protein]-L-tyrosine phosphate. A chromosomal aberration involving ABL1 is a cause of chronic myeloid leukemia (CML) [MIM:608232]. Translocation t(9;22)(q34;q11) with BCR. The translocation produces a BCR-ABL found also in acute myeloid leukemia (AML) and acute lymphoblastic leukemia (ALL). The antibody is specific to ABL1.

## Stockage

### Stockage:

Stocker à -20°C. Stable pendant un an après l'expédition.

### Tampon de stockage:

PBS avec azoture de sodium à 0,02 % et glycérol à 50 % pH 7,3

L'aliquotage n'est pas nécessaire pour le stockage à -20C

\*\*\* Les 20ul contiennent 0,1% de BSA.

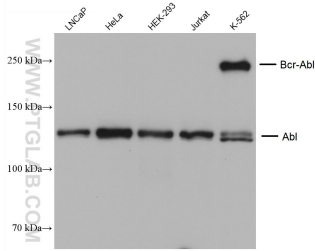
For technical support and original validation data for this product please contact:

T: 1 (888) 4PTGLAB (1-888-478-4522) (toll free  
in USA), or 1(312) 455-8498 (outside USA)

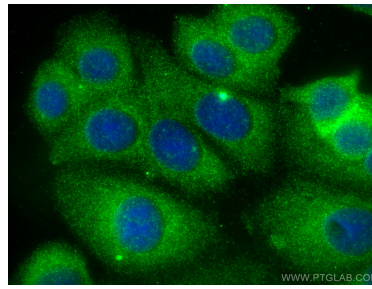
E: [proteintech@ptglab.com](mailto:proteintech@ptglab.com)  
W: [ptglab.com](http://ptglab.com)

This product is exclusively available under Proteintech Group brand and is not available to purchase from any other manufacturer.

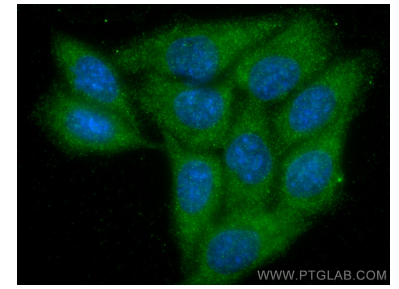
## Données de validation sélectionnées



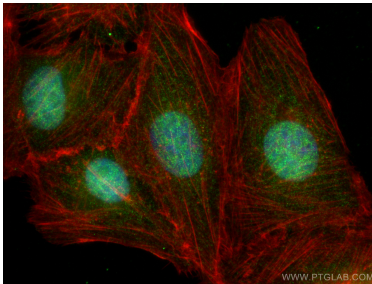
Various lysates were subjected to SDS PAGE followed by western blot with 68254-1-Ig (ABL1 antibody) at dilution of 1:5000 incubated at room temperature for 1.5 hours.



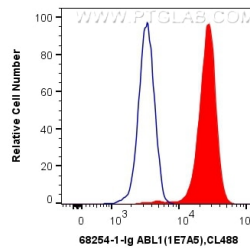
Immunofluorescent analysis of (-20°C Methanol) fixed MCF-7 cells using ABL1 antibody (68254-1-Ig, Clone: 1E7A5) at dilution of 1:800 and CoraLite®488-Conjugated AffiniPure Goat Anti-Mouse IgG(H+L).



Immunofluorescent analysis of (-20°C Methanol) fixed HepG2 cells using ABL1 antibody (68254-1-Ig, Clone: 1E7A5) at dilution of 1:400 and CoraLite®488-Conjugated AffiniPure Goat Anti-Mouse IgG(H+L).



Immunofluorescent analysis of (4% PFA) fixed U2OS cells using ABL1 antibody (68254-1-Ig, Clone: 1E7A5) at dilution of 1:800 and CoraLite®488-Conjugated AffiniPure Goat Anti-Mouse IgG(H+L), CL594-Phalloidin (red).



1X10<sup>6</sup> K-562 cells were intracellularly stained with 0.4 ug Anti-Human ABL1 (68254-1-Ig, Clone:1E7A5) and CoraLite®488-Conjugated AffiniPure Goat Anti-Mouse IgG(H+L) at dilution 1:1000 (red), or 0.4 ug Mouse IgG2b Isotype Control (66360-3-Ig, Clone: K11B8C4B5) (blue). Cells were fixed with 4% PFA and permeabilized with Flow Cytometry Perm Buffer (PF00011-C).