

À des fins de recherche uniquement

Anticorps Monoclonal anti-CHCHD3



Numéro de catalogue: 68259-1-Ig **1 Publications**

Informations de base

Numéro de catalogue: 68259-1-Ig	Numéro d'acquisition GenBank: BC014839	Méthode de purification: Purification par protéine A
Taille: 150ul , Concentration: 1000 µg/ml by Nanodrop;	Identification du gène (NCBI): 54927	CloneNo.: 1C8H12
Hôte: Mouse	Nom complet: coiled-coil-helix-coiled-coil-helix domain containing 3	Dilutions recommandées: WB 1:5000-1:50000 IF 1:400-1:1600
Isotype: IgG2a	MW calculé: 227 aa, 26 kDa	
Immunogen Catalog Number: AG22628	MW observés: 26 kDa	

Applications

Applications testées:

IF, WB, ELISA

Demandes citées:

WB

Spécificité de l'espèce:

Humain, Lapin, porc, rat, souris

Espèces citées:

rat

Contrôles positifs:

WB : tissu cardiaque de porc, cellules A549, cellules HeLa, tissu cardiaque de lapin, tissu cardiaque de rat, tissu cardiaque de souris, tissu cérébral de rat

IF : cellules MCF-7,

Informations générales

CHCHD3, initially identified as a substrate for cAMP-dependent protein kinase (PKA), is a ubiquitous protein in the mitochondria and plays a prominent role in maintaining cristae integrity and mitochondrial function. In mitochondria, ChChd3 is predominantly localized to the inner membrane (IM), facing toward the intermembrane space (IMS), and is part of the large protein complex now called as MINOS (mitochondrial inner membrane organizing system), or MIB (mitochondrial intermembrane space bridging). CHCHD3 is highly conserved in mammals with human and mouse protein sharing 92% sequence similarity.

Publications notables

Autrice	Pubmed ID	Journal	Application
Jian Guo	36819507	Ann Transl Med	WB

Stockage

Stockage:

Stocker à -20°C. Stable pendant un an après l'expédition.

Tampon de stockage:

PBS avec azoture de sodium à 0,02 % et glycérol à 50 % pH 7,3

L'aliquotage n'est pas nécessaire pour le stockage à -20C

*** Les 20ul contiennent 0,1% de BSA.

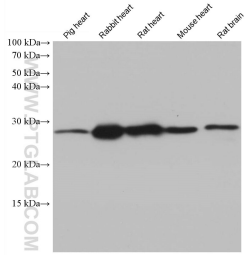
For technical support and original validation data for this product please contact:

T: 1 (888) 4PTGLAB (1-888-478-4522) (toll free in USA), or 1(312) 455-8498 (outside USA)

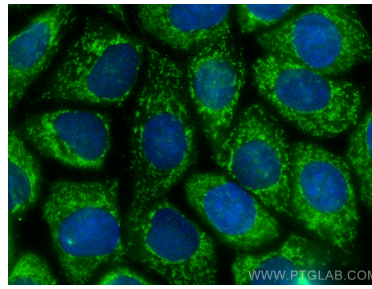
E: proteintech@ptglab.com
W: ptglab.com

This product is exclusively available under Proteintech Group brand and is not available to purchase from any other manufacturer.

Données de validation sélectionnées



Various lysates were subjected to SDS PAGE followed by western blot with 68259-1-Ig (CHCHD3 antibody) at dilution of 1:20000 incubated at room temperature for 1.5 hours.



Immunofluorescent analysis of (-20°C Methanol) fixed MCF-7 cells using CHCHD3 antibody (68259-1-Ig, Clone: 1C8H12) at dilution of 1:800 and CoraLite®488-Conjugated AffiniPure Goat Anti-Mouse IgG(H+L).