

À des fins de recherche uniquement

Anticorps Monoclonal anti-RPS20

Numéro de catalogue: 68270-1-Ig



Informations de base

Numéro de catalogue: 68270-1-Ig	Numéro d'acquisition GenBank: BC007507	Méthode de purification: Purification par protéine G
Taille: 150ul, Concentration: 1000 µg/ml by Nanodrop;	Identification du gène (NCBI): 6224	CloneNo.: 3E9B4
Hôte: Mouse	Nom complet: ribosomal protein S20	Dilutions recommandées: WB 1:5000-1:50000 IF 1:200-1:800
Isotype: IgG1	MW calculé 13 kDa	
Immunogen Catalog Number: AG8275	MW observés: 16 kDa	

Applications

Applications testées:
IF, WB, ELISA
Spécificité de l'espèce:
Humain

Contrôles positifs:

WB : cellules Jurkat, cellules HEK-293, cellules HeLa,
cellules HSC-T6, cellules K-562, cellules NIH/3T3
IF : cellules HeLa,

Informations générales

Ribosomes, the organelles that catalyze protein synthesis, consist of a small 40S subunit and a large 60S subunit. Together these subunits are composed of 4 RNA species and approximately 80 structurally distinct proteins. RPS20 is a component of the 40S subunit. The protein belongs to the S10P family of ribosomal proteins. It is located in the cytoplasm.

Stockage

Stockage:
Stocker à -20°C. Stable pendant un an après l'expédition.
Tampon de stockage:
PBS avec azoture de sodium à 0,02 % et glycérol à 50 % pH 7,3
L'aliquotage n'est pas nécessaire pour le stockage à -20C

*** Les 20ul contiennent 0,1% de BSA.

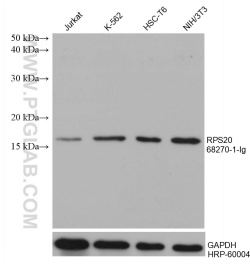
For technical support and original validation data for this product please contact:

T: 1 (888) 4PTGLAB (1-888-478-4522) (toll free
in USA), or 1(312) 455-8498 (outside USA)

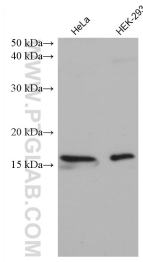
E: proteintech@ptglab.com
W: ptglab.com

This product is exclusively available under Proteintech Group brand and is not available to purchase from any other manufacturer.

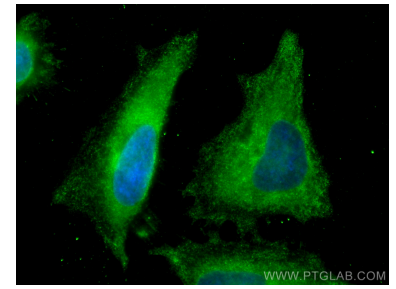
Données de validation sélectionnées



Various lysates were subjected to SDS PAGE followed by western blot with 68270-1-Ig (RPS20 antibody) at dilution of 1:10000 incubated at room temperature for 1.5 hours. The membrane was stripped and reblotted with HRP-conjugated GAPDH Monoclonal antibody (HRP-60004) as loading control.



Various lysates were subjected to SDS PAGE followed by western blot with 68270-1-Ig (RPS20 antibody) at dilution of 1:10000 incubated at room temperature for 1.5 hours.



Immunofluorescent analysis of (-20°C Methanol) fixed HeLa cells using RPS20 antibody (68270-1-Ig, Clone: 3E9B4) at dilution of 1:400 and Coralite®488-Conjugated AffiniPure Goat Anti-Mouse IgG(H+L).