

À des fins de recherche uniquement

Anticorps Monoclonal anti-CRMP5

Numéro de catalogue: 68272-1-Ig



Informations de base

Numéro de catalogue: 68272-1-Ig	Numéro d'acquisition GenBank: BC002874	Méthode de purification: Purification par protéine A
Taille: 150ul, Concentration: 1000 µg/ml by Nanodrop;	Identification du gène (NCBI): 56896	CloneNo.: 3F2D8
Hôte: Mouse	Nom complet: dihydropyrimidinase-like 5	Dilutions recommandées: WB 1:5000-1:50000
Isotype: IgG2a	MW calculé: 61 kDa	
Immunogen Catalog Number: AG0783	MW observés: 61 kDa	

Applications

Applications testées:
WB, ELISA

Spécificité de l'espèce:
Humain, Lapin, porc, rat, souris

Contrôles positifs:

WB : tissu cérébral de porc, tissu de cervelet de lapin,
tissu de cervelet de rat

Informations générales

Collapsin response mediator proteins (CRMPs) are a family consisting of five homologous cytosolic phosphoproteins (CRMP1-5). All five CRMPs are abundantly expressed in the developing brain and the adult nervous system. CRMP5 is phylogenetically divergent from the other four CRMPs, sharing only 50% homology; this protein plays an important role in modulating filopodial dynamics and, in turn, restricting neuronal growth cone development.

Stockage

Stockage:
Stocker à -20°C. Stable pendant un an après l'expédition.

Tampon de stockage:
PBS avec azoture de sodium à 0,02 % et glycérol à 50 % pH 7,3
L'aliquotage n'est pas nécessaire pour le stockage à -20C

***** Les 20ul contiennent 0,1% de BSA.**

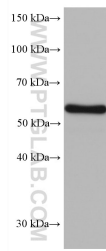
For technical support and original validation data for this product please contact:

T: 1 (888) 4PTGLAB (1-888-478-4522) (toll free
in USA), or 1(312) 455-8498 (outside USA)

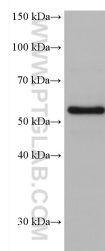
E: proteintech@ptglab.com
W: ptglab.com

This product is exclusively available under Proteintech Group brand and is not available to purchase from any other manufacturer.

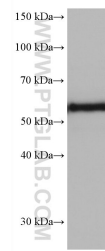
Données de validation sélectionnées



pig brain tissue were subjected to SDS PAGE followed by western blot with 68272-1-Ig (DPYSL5 antibody) at dilution of 1:20000 incubated at room temperature for 1.5 hours.



rabbit cerebellum tissue were subjected to SDS PAGE followed by western blot with 68272-1-Ig (DPYSL5 antibody) at dilution of 1:20000 incubated at room temperature for 1.5 hours.



rat cerebellum tissue were subjected to SDS PAGE followed by western blot with 68272-1-Ig (CRMP5 antibody) at dilution of 1:20000 incubated at room temperature for 1.5 hours.