

À des fins de recherche uniquement

Anticorps Monoclonal anti-LZTFL1

Numéro de catalogue: 68281-1-Ig



Informations de base

Numéro de catalogue: 68281-1-Ig	Numéro d'acquisition GenBank: BC025988	Méthode de purification: Purification par protéine A
Taille: 150ul, Concentration: 1000 µg/ml by Nanodrop;	Identification du gène (NCBI): 54585	CloneNo.: 2C1F6
Hôte: Mouse	Nom complet: leucine zipper transcription factor- like 1	Dilutions recommandées: WB 1:5000-1:50000 IF 1:400-1:1600
Isotype: IgG2a	MW calculé 299 aa, 35 kDa	
Immunogen Catalog Number: AG10733	MW observés: 35 kDa	

Applications

Applications testées:
FC, IF, WB, ELISA

Spécificité de l'espèce:
Humain

Contrôles positifs:

WB : cellules HCT 116, cellules HEK-293, cellules HeLa,
cellules Jurkat, cellules K-562, cellules LNCaP

IF : cellules Jurkat,

Informations générales

LZTFL1 belongs to the LZTFL1 family. It is an important regulator of BBSome ciliary trafficking and hedgehog signaling. LZTFL1 regulates Ciliary Trafficking of the BBSome and Smoothed. (PMID:22072986)

Stockage

Stockage:
Stocker à -20°C. Stable pendant un an après l'expédition.

Tampon de stockage:
PBS avec azote de sodium à 0,02 % et glycérol à 50 % pH 7,3

L'aliquotage n'est pas nécessaire pour le stockage à -20C

*** Les 20ul contiennent 0,1% de BSA.

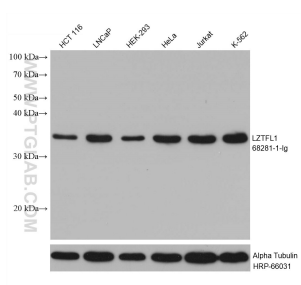
For technical support and original validation data for this product please contact:

T: 1 (888) 4PTGLAB (1-888-478-4522) (toll free
in USA), or 1(312) 455-8498 (outside USA)

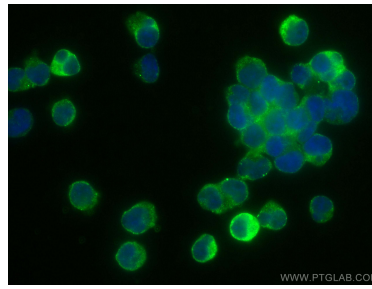
E: proteintech@ptglab.com
W: ptglab.com

This product is exclusively available under Proteintech Group brand and is not available to purchase from any other manufacturer.

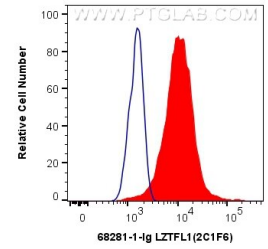
Données de validation sélectionnées



Various lysates were subjected to SDS PAGE followed by western blot with 68281-1-Ig (LZTF1 antibody) at dilution of 1:10000 incubated at room temperature for 1.5 hours. The membrane was stripped and reblotted with HRP-conjugated Alpha Tubulin Monoclonal antibody (HRP-66031) as loading control.



Immunofluorescent analysis of (4% PFA) fixed Jurkat cells using LZTF1 antibody (68281-1-Ig, Clone: 2C1F6) at dilution of 1:800 and CoraLite®488-Conjugated AffiniPure Goat Anti-Mouse IgG(H+L).



1X10⁶ Jurkat cells were intracellularly stained with 0.4 ug Anti-Human LZTF1 (68281-1-Ig, Clone: 2C1F6) and CoraLite®488-Conjugated AffiniPure Goat Anti-Mouse IgG(H+L) at dilution 1:1000 (red), or 0.4 ug Mouse IgG2a Isotype Control (C1.18.4) (65208-1-Ig, Clone: C1.18.4) (blue). Cells were fixed with 4% PFA and permeabilized with Flow Cytometry Perm Buffer (PF00011-C).