

À des fins de recherche uniquement

Anticorps Monoclonal anti-SERCA3

Numéro de catalogue: 68287-1-Ig



Informations de base

Numéro de catalogue: 68287-1-Ig	Numéro d'acquisition GenBank: BC035729	Méthode de purification: Purification par protéine G
Taille: 150ul, Concentration: 1000 µg/ml by Nanodrop;	Identification du gène (NCBI): 489	CloneNo.: 1A2C2
Hôte: Mouse	Nom complet: ATPase, Ca++ transporting, ubiquitous	Dilutions recommandées: WB 1:5000-1:50000
Isotype: IgG1	MW calculé 1043 aa, 114 kDa	
Immunogen Catalog Number: AG4527	MW observés: 97-110 kDa	

Applications

Applications testées:
WB, ELISA

Spécificité de l'espèce:
Humain, rat, souris

Contrôles positifs:

WB : cellules HepG2, cellules HL-60, cellules Jurkat, cellules K-562, cellules MOLT-4, tissu cardiaque de rat, tissu cardiaque de souris

Informations générales

The SERCA, which pumps cytosolic Ca²⁺ into the ER, is an imperative maintainer of ER Ca²⁺ homeostasis. The mammalian SERCA family is comprised of three tissue-specific members, SERCA1-3. SERCA3 is present in endothelial and epithelial cells of various tissues. SERCA3 helps regulate intracellular Ca²⁺, which is critical for maintaining normal INS secretion and is closely linked to metabolism, neuronal plasticity, gene transcription, cell growth, differentiation, apoptosis, protein folding and carcinogenesis. Several isoforms of SERCA3 exist due to the alternative splicing.

Stockage

Stockage:
Stocker à -20°C. Stable pendant un an après l'expédition.
Tampon de stockage:
PBS avec azoture de sodium à 0,02 % et glycérol à 50 % pH 7,3
L'aliqotage n'est pas nécessaire pour le stockage à -20C

*** Les 20ul contiennent 0,1% de BSA.

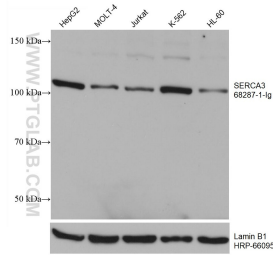
For technical support and original validation data for this product please contact:

T: 1 (888) 4PTGLAB (1-888-478-4522) (toll free
in USA), or 1(312) 455-8498 (outside USA)

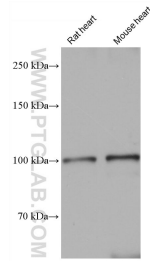
E: proteintech@ptglab.com
W: ptglab.com

This product is exclusively available under Proteintech Group brand and is not available to purchase from any other manufacturer.

Données de validation sélectionnées



Various lysates were subjected to SDS PAGE followed by western blot with 68287-1-Ig (ATP2A3 antibody) at dilution of 1:10000 incubated at room temperature for 1.5 hours. The membrane was stripped and reblotted with HRP-conjugated Lamin B1 Monoclonal antibody (HRP-66095) as loading control.



Various lysates were subjected to SDS PAGE followed by western blot with 68287-1-Ig (ATP2A3 antibody) at dilution of 1:10000 incubated at room temperature for 1.5 hours.