

À des fins de recherche uniquement

# Anticorps Monoclonal anti-Cytokeratin 7



Numéro de catalogue: 68296-1-Ig

## Informations de base

Numéro de catalogue: 68296-1-Ig	Numéro d'acquisition GenBank: BC002700	Méthode de purification: Purification par protéine G
Taille: 150ul, Concentration: 1000 µg/ml by Nanodrop and 667 µg/ml by Bradford method using BSA as the standard;	Identification du gène (NCBI): 3855	CloneNo.: 3G2H1
Hôte: Mouse	Nom complet: keratin 7	Dilutions recommandées: WB 1:5000-1:50000 IHC 1:4150-1:16600
Isotype: IgG1	MW calculé: 469 aa, 51 kDa	
Immunogen Catalog Number: AG7895		

## Applications

### Applications testées:

IHC, WB, ELISA

### Spécificité de l'espèce:

Humain

**Remarque-IHC: il est suggéré de démasquer l'antigène avec un tampon de TE buffer pH 9,0; (\*) À défaut, le démasquage de l'antigène peut être effectué avec un tampon citrate pH 6,0.**

### Contrôles positifs:

WB : cellules EC109, cellules A431, cellules A549, cellules BxPC-3, cellules HaCaT, cellules HeLa, cellules T-47D

IHC : tissu de cancer du poumon humain, tissu de cancer de l'endomètre humain, tissu de cancer du pancréas humain, tissu de tumeur ovarienne humaine

## Informations générales

Keratins are a large family of proteins that form the intermediate filament cytoskeleton of epithelial cells, which are classified into two major sequence types. Type I keratins are a group of acidic intermediate filament proteins, including K9-K23, and the hair keratins Ha1-Ha8. Type II keratins are the basic or neutral counterparts to the acidic type I keratins, including K1-K8, and the hair keratins, Hb1-Hb6. KRT7, also named cytokeratin 7, is one member of type II basic cytokeratin. It is specifically expressed in the simple epithelia lining the cavities of the internal organs and in the gland ducts and blood vessels, and their neoplasms. KRT7 is a marker of epithelial tissues, but not present in carcinomas of stratified squamous cell origin.

## Stockage

### Stockage:

Stocker à -20°C. Stable pendant un an après l'expédition.

### Tampon de stockage:

PBS avec azoture de sodium à 0,02 % et glycérol à 50 % pH 7,3

L'aliquotage n'est pas nécessaire pour le stockage à -20C

\*\*\* Les 20ul contiennent 0,1% de BSA.

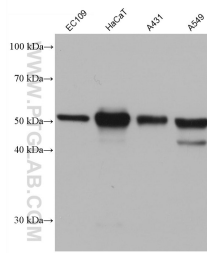
For technical support and original validation data for this product please contact:

T: 1 (888) 4PTGLAB (1-888-478-4522) (toll free in USA), or 1(312) 455-8498 (outside USA)

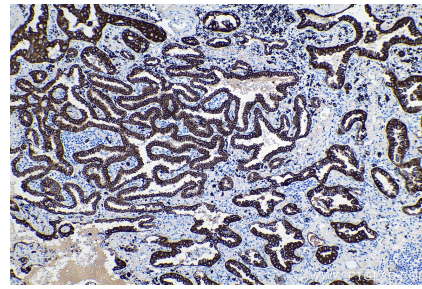
E: [proteintech@ptglab.com](mailto:proteintech@ptglab.com)  
W: [ptglab.com](http://ptglab.com)

This product is exclusively available under Proteintech Group brand and is not available to purchase from any other manufacturer.

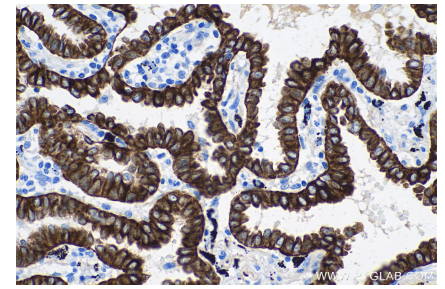
## Données de validation sélectionnées



Various lysates were subjected to SDS PAGE followed by western blot with 68296-1-Ig (Cytokeratin 7 antibody) at dilution of 1:20000 incubated at room temperature for 1.5 hours.



Immunohistochemical analysis of paraffin-embedded human lung cancer tissue slide using 68296-1-Ig (Cytokeratin 7 antibody) at dilution of 1:8300 (under 10x lens). Heat mediated antigen retrieval with Tris-EDTA buffer (pH 9.0).



Immunohistochemical analysis of paraffin-embedded human lung cancer tissue slide using 68296-1-Ig (Cytokeratin 7 antibody) at dilution of 1:8300 (under 40x lens). Heat mediated antigen retrieval with Tris-EDTA buffer (pH 9.0).