

À des fins de recherche uniquement

# Anticorps Monoclonal anti-Cardiac Troponin T



Numéro de catalogue: 68300-1-Ig

## Informations de base

Numéro de catalogue: 68300-1-Ig	Numéro d'acquisition GenBank: BC002653	Méthode de purification: Purification par protéine G
Taille: 150ul , Concentration: 500 µg/ml by Nanodrop;	Identification du gène (NCBI): 7139	CloneNo.: 4E2D8
Hôte: Mouse	Nom complet: troponin T type 2 (cardiac)	Dilutions recommandées: WB 1:20000-1:100000 IF 1:200-1:800
Isotype: IgG1	MW calculé 36 kDa	
Immunogen Catalog Number: AG7716	MW observés: 34-40 kDa	

## Applications

### Applications testées:

IF, WB, ELISA

### Spécificité de l'espèce:

Lapin, porc, poulet, rat, souris

### Contrôles positifs:

WB : tissu cardiaque de rat, tissu cardiaque de lapin, tissu cardiaque de porc, tissu cardiaque de souris

IF : tissu cardiaque de souris, cellules H9C2

## Informations générales

Cardiac Troponin T, also named as cTnT, TNNT2. This gene encodes the cardiac isoform of troponin T. The encoded protein is the tropomyosin-binding subunit of the troponin complex, which is located on the thin filament of striated muscles and regulates muscle contraction in response to alterations in intracellular calcium ion concentration. Mutations in this gene have been associated with familial hypertrophic cardiomyopathy as well as with dilated cardiomyopathy. Cardiac Troponin T can be detected as about 34-40 kDa.

## Stockage

### Stockage:

Stocker à -20°C. Stable pendant un an après l'expédition.

### Tampon de stockage:

PBS avec azoture de sodium à 0,02 % et glycérol à 50 % pH 7,3

L'aliquotage n'est pas nécessaire pour le stockage à -20C

**\*\*\* Les 20ul contiennent 0,1% de BSA.**

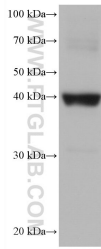
For technical support and original validation data for this product please contact:

T: 1 (888) 4PTGLAB (1-888-478-4522) (toll free  
in USA), or 1(312) 455-8498 (outside USA)

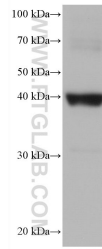
E: [proteintech@ptglab.com](mailto:proteintech@ptglab.com)  
W: [ptglab.com](http://ptglab.com)

**This product is exclusively available under Proteintech Group brand and is not available to purchase from any other manufacturer.**

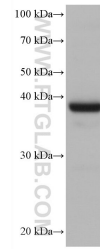
## Données de validation sélectionnées



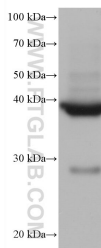
pig heart tissue were subjected to SDS PAGE followed by western blot with 68300-1-Ig (cTnT antibody) at dilution of 1:50000 incubated at room temperature for 1.5 hours.



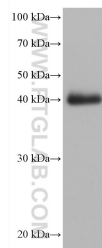
rabbit heart tissue were subjected to SDS PAGE followed by western blot with 68300-1-Ig (cTnT antibody) at dilution of 1:50000 incubated at room temperature for 1.5 hours.



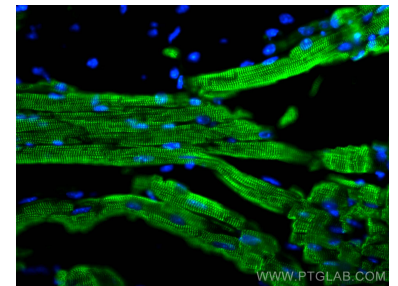
rat heart tissue were subjected to SDS PAGE followed by western blot with 68300-1-Ig (cTnT antibody) at dilution of 1:50000 incubated at room temperature for 1.5 hours.



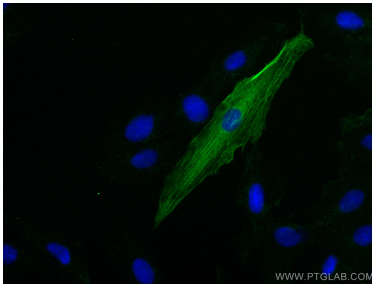
mouse heart tissue were subjected to SDS PAGE followed by western blot with 68300-1-Ig (cTnT antibody) at dilution of 1:50000 incubated at room temperature for 1.5 hours.



chicken heart tissue were subjected to SDS PAGE followed by western blot with 68300-1-Ig (cTnT antibody) at dilution of 1:50000 incubated at room temperature for 1.5 hours.



Immunofluorescent analysis of (4% PFA) fixed mouse heart tissue using cTnT antibody (68300-1-Ig, Clone: 4E2D8) at dilution of 1:400 and CoraLite®488-Conjugated AffiniPure Goat Anti-Mouse IgG(H+L).



Immunofluorescent analysis of (4% PFA) fixed H9C2 cells using Cardiac Troponin T antibody (68300-1-Ig, Clone: 4E2D8) at dilution of 1:400 and CoraLite®488-Conjugated AffiniPure Goat Anti-Mouse IgG(H+L).