

À des fins de recherche uniquement

Anticorps Monoclonal anti-MOCS2

Numéro de catalogue: 68308-1-Ig



Informations de base

Numéro de catalogue: 68308-1-Ig	Numéro d'acquisition GenBank: BC046097	Méthode de purification: Purification par protéine G
Taille: 150ul , Concentration: 1000 µg/ml by Nanodrop;	Identification du gène (NCBI): 4338	CloneNo.: 3H2D5
Hôte: Mouse	Nom complet: molybdenum cofactor synthesis 2	Dilutions recommandées: WB 1:5000-1:50000 IF 1:200-1:800
Isotype: IgG1	MW calculé 21 kDa	
Immunogen Catalog Number: AG6282	MW observés: 21 kDa	

Applications

Applications testées:
IF, WB, ELISA

Spécificité de l'espèce:
Humain

Contrôles positifs:

WB : cellules A549, cellules HEK-293, cellules HeLa,
cellules Jurkat, cellules K-562, cellules LNCaP

IF : cellules HeLa,

Informations générales

MOCS2(Molybdenum cofactor synthesis 2) is a heterotetrameric synthase comprised of 2 small (MOCS2A) and 2 large (MOCS2B) subunits. MOCS2 acts as a sulfur carrier required for molybdopterin biosynthesis. The two MOCS2 proteins A and B are subunits of molybdopterin synthase incorporating sulfur groups delivered by the MOCS3 sulfurylase.

Stockage

Stockage:
Stocker à -20°C. Stable pendant un an après l'expédition.

Tampon de stockage:
PBS avec azoture de sodium à 0,02 % et glycérol à 50 % pH 7,3

L'aliquotage n'est pas nécessaire pour le stockage à -20C

*** Les 20ul contiennent 0,1% de BSA.

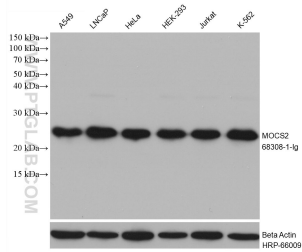
For technical support and original validation data for this product please contact:

T: 1 (888) 4PTGLAB (1-888-478-4522) (toll free
in USA), or 1(312) 455-8498 (outside USA)

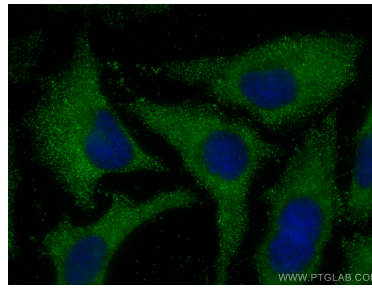
E: proteintech@ptglab.com
W: ptglab.com

This product is exclusively available under Proteintech Group brand and is not available to purchase from any other manufacturer.

Données de validation sélectionnées



Various lysates were subjected to SDS PAGE followed by western blot with 68308-1-ig (MOCS2 antibody) at dilution of 1:20000 incubated at room temperature for 1.5 hours. The membrane was stripped and reblotted with HRP-conjugated Beta Actin Monoclonal antibody (HRP-66009) as loading control.



Immunofluorescent analysis of (-20°C Methanol) fixed HeLa cells using MOCS2 antibody (68308-1-ig, Clone: 3H2D5) at dilution of 1:400 and CoraLite®488-Conjugated AffiniPure Goat Anti-Mouse IgG(H+L).