

À des fins de recherche uniquement

# Anticorps Monoclonal anti-EXOSC10

Numéro de catalogue: 68315-1-Ig



## Informations de base

Numéro de catalogue: 68315-1-Ig	Numéro d'acquisition GenBank: BC039901	Méthode de purification: Purification par protéine G
Taille: 150ul, Concentration: 1000 µg/ml by Nanodrop;	Identification du gène (NCBI): 5394	CloneNo.: 1D6G9
Hôte: Mouse	Nom complet: exosome component 10	Dilutions recommandées: WB 1:5000-1:50000 IP 0.5-4.0 ug for IP and 1:500-1:2000 for WB
Isotype: IgG1	MW calculé: 98 kDa	IF 1:500-1:2000
Immunogen Catalog Number: AG28587	MW observés: 98 kDa	

## Applications

Applications testées:  
IF, IP, WB, ELISA  
Spécificité de l'espèce:  
Humain

### Contrôles positifs:

WB : cellules LNCaP, cellules HeLa, cellules HepG2,  
cellules HSC-T6, cellules Jurkat, cellules K-562  
IP : cellules HeLa,  
IF : cellules HeLa,

## Informations générales

About 50% of patients with polymyositis/scleroderma (PM-Scl) overlap syndrome are reported to have autoantibodies to a nuclear/nucleolar particle termed PM-Scl. Exosome component 10 (EXOSC10), also named autoantigen PM/Scl 2, is the 100 kDa antigen component of PM-Scl and is recognized by most sera of PM-Scl patients. EXOSC10 is strongly enriched in the nucleolus and a small amount has been found in cytoplasm supporting the existence of a nucleolar RNA exosome complex form. As a putative catalytic component of the RNA exosome complex which has 3'->5' exoribonuclease activity, EXOSC10 participates in a multitude of cellular RNA processing and degradation events.

## Stockage

Stockage:  
Stocker à -20°C. Stable pendant un an après l'expédition.  
Tampon de stockage:  
PBS avec azoture de sodium à 0,02 % et glycérol à 50 % pH 7,3  
L'aliquotage n'est pas nécessaire pour le stockage à -20C

\*\*\* Les 20ul contiennent 0,1% de BSA.

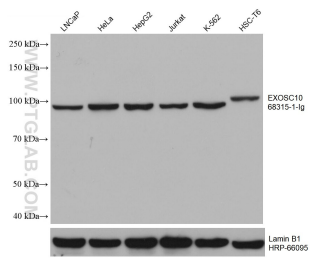
For technical support and original validation data for this product please contact:

T: 1 (888) 4PTGLAB (1-888-478-4522) (toll free  
in USA), or 1(312) 455-8498 (outside USA)

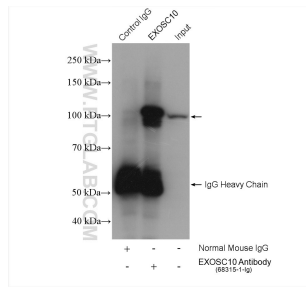
E: [proteintech@ptglab.com](mailto:proteintech@ptglab.com)  
W: [ptglab.com](http://ptglab.com)

This product is exclusively available under Proteintech Group brand and is not available to purchase from any other manufacturer.

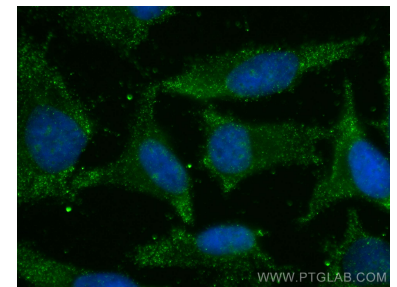
## Données de validation sélectionnées



Various lysates were subjected to SDS PAGE followed by western blot with 68315-1-Ig (EXOSC10 antibody) at dilution of 1:10000 incubated at room temperature for 1.5 hours. The membrane was stripped and reblotted with HRP-conjugated Lamin B1 Monoclonal antibody (HRP-66095) as loading control.



IP result of anti-EXOSC10 (IP:68315-1-Ig, 4ug; Detection:68315-1-Ig 1:1000) with HeLa cells lysate 1720 ug.



Immunofluorescent analysis of (-20°C Ethanol) fixed HeLa cells using EXOSC10 antibody (68315-1-Ig, Clone: 1D6G9) at dilution of 1:1000 and CoraLite®488-Conjugated AffiniPure Goat Anti-Mouse IgG(H+L).