

À des fins de recherche uniquement

# Anticorps Monoclonal anti-Ataxin 2

Numéro de catalogue: 68316-1-Ig



## Informations de base

Numéro de catalogue: 68316-1-Ig	Numéro d'acquisition GenBank: BC114546	Méthode de purification: Précipitation de l'acide caprylique/du sulfate d'ammonium
Taille: 150ul , Concentration: 1000 µg/ml by Bradford method using BSA as the standard;	Identification du gène (NCBI): 6311	CloneNo.: 1E8A2
Hôte: Mouse	Nom complet: ataxin 2	Dilutions recommandées: WB 1:2000-1:10000 IHC 1:250-1:1000 IF 1:200-1:800
Isotype: IgM	MW calculé: 1313 aa, 140 kDa	
Immunogen Catalog Number: AG17402	MW observés: 140-150 kDa	

## Applications

### Applications testées:

IF, IHC, WB, ELISA

### Spécificité de l'espèce:

Humain, rat, souris

**Remarque-IHC: il est suggéré de démasquer l'antigène avec un tampon de TE buffer pH 9,0; (\*) À défaut, 'le démasquage de l'antigène peut être 'effectué avec un tampon citrate pH 6,0.**

### Contrôles positifs:

WB : cellules LNCaP, cellules 4T1, cellules HEK-293, cellules HeLa, cellules HepG2, cellules HSC-T6, cellules Jurkat, cellules MCF-7, cellules NIH/3T3

IHC : tissu cérébral de rat,

IF : tissu cérébral de rat,

## Informations générales

ATXN2 contains a repeat structure with 22 or 23 triplets coding for glutamine and the (CAG)<sub>8</sub>CAA(CAG)<sub>4</sub>CAA(CAG)<sub>8</sub> sequence; expansion of this domain to a size  $\geq 34$  triplets with a pure CAG sequence primarily causes autosomal dominant SCA2 [PMID:18418684], while ATXN2 expansions with CAA interruptions were observed as the cause of Levo-dopa responsive Parkinson's disease [PMID:10668726]. ATXN2 expansions associated with ALS were reported to be interrupted by at least one CAA triplet [PMID:21537950]

## Stockage

### Stockage:

Stocker à -20°C. Stable pendant un an après l'expédition.

### Tampon de stockage:

PBS avec azoture de sodium à 0,02 % et glycérol à 50 % pH 7,3

L'aliquotage n'est pas nécessaire pour le stockage à -20C

\*\*\* Les 20ul contiennent 0,1% de BSA.

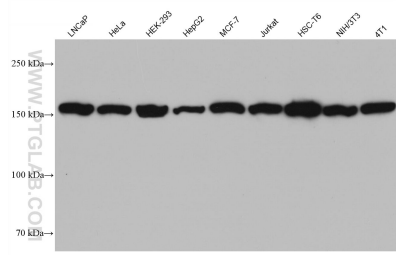
For technical support and original validation data for this product please contact:

T: 1 (888) 4PTGLAB (1-888-478-4522) (toll free in USA), or 1(312) 455-8498 (outside USA)

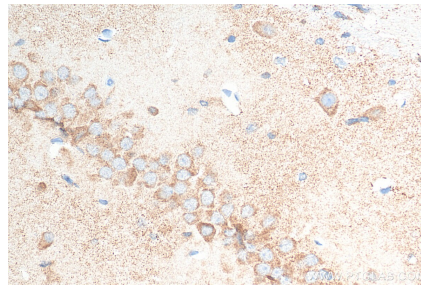
E: proteintech@ptglab.com  
W: ptglab.com

This product is exclusively available under Proteintech Group brand and is not available to purchase from any other manufacturer.

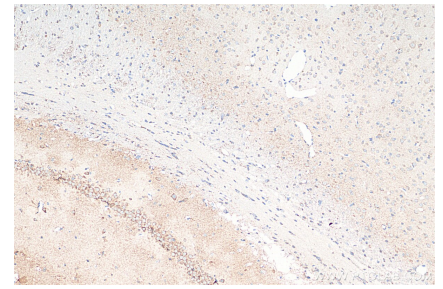
## Données de validation sélectionnées



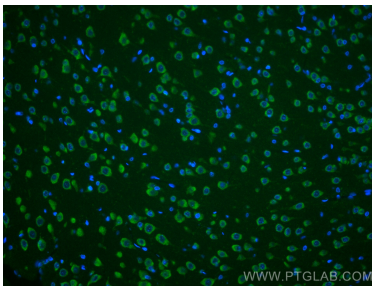
Various lysates were subjected to SDS PAGE followed by western blot with 68316-1-Ig (Ataxin 2 antibody) at dilution of 1:5000 incubated at room temperature for 1.5 hours.



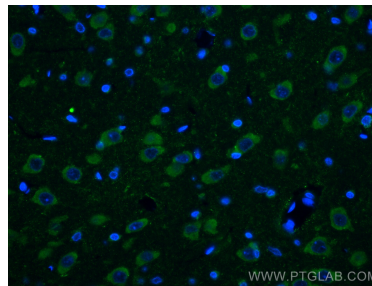
Immunohistochemical analysis of paraffin-embedded rat brain tissue slide using 68316-1-Ig (Ataxin 2 antibody) at dilution of 1:500 (under 40x lens). Heat mediated antigen retrieval with Tris-EDTA buffer (pH 9.0).



Immunohistochemical analysis of paraffin-embedded rat brain tissue slide using 68316-1-Ig (Ataxin 2 antibody) at dilution of 1:500 (under 10x lens). Heat mediated antigen retrieval with Tris-EDTA buffer (pH 9.0).



Immunofluorescent analysis of (4% PFA) fixed rat brain tissue using Ataxin 2 antibody (68316-1-Ig, Clone: 1E8A2) at dilution of 1:400 and CoraLite@488-Conjugated AffiniPure Goat Anti-Mouse IgG(H+L).



Immunofluorescent analysis of (4% PFA) fixed rat brain tissue using Ataxin 2 antibody (68316-1-Ig, Clone: 1E8A2) at dilution of 1:400 and CoraLite@488-Conjugated AffiniPure Goat Anti-Mouse IgG(H+L).