

À des fins de recherche uniquement

Anticorps Monoclonal anti-COL3A1

Numéro de catalogue: 68320-1-Ig **3 Publications**



Informations de base

Numéro de catalogue: 68320-1-Ig	Numéro d'acquisition GenBank: BC028178	Méthode de purification: Purification par protéine G
Taille: 150ul , Concentration: 1000 µg/ml by Nanodrop;	Identification du gène (NCBI): 1281	CloneNo.: 3B1F3
Hôte: Mouse	Nom complet: collagen, type III, alpha 1	Dilutions recommandées: WB 1:5000-1:50000 IHC 1:1000-1:4000
Isotype: IgG1	MW calculé: 1466 aa, 139 kDa	
Immunogen Catalog Number: AG4229	MW observés: 130 kDa	

Applications

Applications testées:

IHC, WB, ELISA

Demandes citées:

WB

Spécificité de l'espèce:

Humain, Lapin, porc, rat

Espèces citées:

Humain, rat, souris

Remarque-IHC: il est suggéré de démasquer l'antigène avec un tampon de TE buffer pH 9,0; (*) À défaut, le démasquage de l'antigène peut être effectué avec un tampon citrate pH 6,0.

Contrôles positifs:

WB : tissu de côlon de porc, tissu cutané de rat, tissu de côlon de rat, tissu placentaire humain, tissu rectal humain

IHC : tissu de tumeur ovarienne humain,

Informations générales

Type III collagen is a fibrillar-forming collagen comprising three $\alpha 1(\text{III})$ chains and is expressed in early embryos and throughout embryogenesis (PMID: 9050868). In the adult, type III collagen is a major component of the extracellular matrix in a variety of internal organs and skin. It occurs in most soft connective tissues along with type I collagen (PMID: 2445760). COL3A1 gene encodes type III procollagen. Mutations in this gene are associated with Ehlers-Danlos syndrome type IV, and with aortic and arterial aneurysms (PMID: 10706896; 2243125; 18389341).

Publications notables

Autrice	Pubmed ID	Journal	Application
Yirong Wu	37580750	J Transl Med	WB
Zhi Jie Li	37391109	Int J Pharm	WB
Karolina Wojtowicz	37088000	Biochem Biophys Res Commun	WB

Stockage

Stockage:

Stocker à -20°C. Stable pendant un an après l'expédition.

Tampon de stockage:

PBS avec azoture de sodium à 0,02 % et glycérol à 50 % pH 7,3

L'aliquotage n'est pas nécessaire pour le stockage à -20C

***** Les 20ul contiennent 0,1% de BSA.**

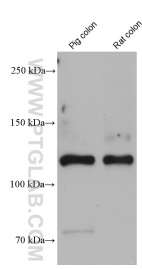
For technical support and original validation data for this product please contact:

T: 1 (888) 4PTGLAB (1-888-478-4522) (toll free in USA), or 1(312) 455-8498 (outside USA)

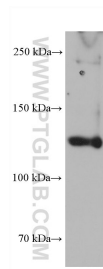
E: proteintech@ptglab.com
W: ptglab.com

This product is exclusively available under Proteintech Group brand and is not available to purchase from any other manufacturer.

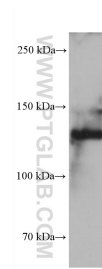
Données de validation sélectionnées



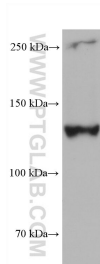
Various lysates were subjected to SDS PAGE followed by western blot with 68320-1-Ig (COL3A1 antibody) at dilution of 1:10000 incubated at room temperature for 1.5 hours.



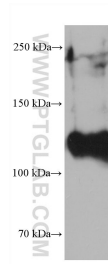
human placenta tissue were subjected to SDS PAGE followed by western blot with 68320-1-Ig (COL3A1 antibody) at dilution of 1:10000 incubated at room temperature for 1.5 hours.



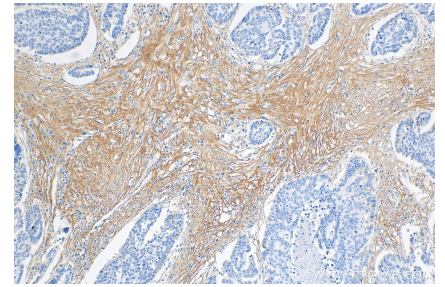
human rectum tissue were subjected to SDS PAGE followed by western blot with 68320-1-Ig (COL3A1 antibody) at dilution of 1:10000 incubated at room temperature for 1.5 hours.



rabbit large intestine tissue were subjected to SDS PAGE followed by western blot with 68320-1-Ig (COL3A1 antibody) at dilution of 1:10000 incubated at room temperature for 1.5 hours.



rat skin tissue were subjected to SDS PAGE followed by western blot with 68320-1-Ig (COL3A1 antibody) at dilution of 1:10000 incubated at room temperature for 1.5 hours.



Immunohistochemical analysis of paraffin-embedded human ovary tumor tissue slide using 68320-1-Ig (COL3A1 antibody) at dilution of 1:2000 (under 10x lens). Heat mediated antigen retrieval with Tris-EDTA buffer (pH 9.0).