

À des fins de recherche uniquement

Anticorps Monoclonal anti-MTHFD1L

Numéro de catalogue: 68321-1-Ig



Informations de base

Numéro de catalogue: 68321-1-Ig	Numéro d'acquisition GenBank: BC017477	Méthode de purification: Purification par protéine A
Taille: 150ul, Concentration: 1000 µg/ml by Nanodrop;	Identification du gène (NCBI): 25902	CloneNo.: 1G1F2
Hôte: Mouse	Nom complet: methylenetetrahydrofolate dehydrogenase (NADP+ dependent) 1-IHC 1:250-1:1000 like	Dilutions recommandées: WB 1:5000-1:50000
Isotype: IgG2b	MW calculé 978 aa, 106 kDa	
Immunogen Catalog Number: AG9061	MW observés: 106 kDa	

Applications

Applications testées:

IHC, WB, ELISA

Spécificité de l'espèce:

Humain, Lapin, rat

Remarque-IHC: il est suggéré de démasquer l'antigène avec un tampon de TE buffer pH 9.0; (*) À défaut, le démasquage de l'antigène peut être effectué avec un tampon citrate pH 6,0.

Contrôles positifs:

WB : cellules U2OS, cellules HEK-293, cellules HeLa, cellules HepG2, cellules LNCaP, tissu testiculaire de lapin, tissu testiculaire de rat

IHC : tissu hépatique de souris,

Informations générales

MTHFD1L (Monofunctional C1-tetrahydrofolate synthase, mitochondrial) is also named as FTHFSDC1 (Formyltetrahydrofolate synthetase). MTHFD1L enzyme is present in mitochondria from normal embryonic tissues and embryonic fibroblast cell lines, and embryonic mitochondria possess the ability to synthesize formate from glycine. It catalyzes the final step in the mitochondrial conversion of 1-C units to formate in embryos. Moreover, MTHFD1L levels were substantially higher in embryonic mitochondria than in adult liver mitochondria and embryonic mitochondria exhibited greater formate production (PMID:19948730). It has 2 isoforms produced by alternative splicing.

Stockage

Stockage:

Stocker à -20°C. Stable pendant un an après l'expédition.

Tampon de stockage:

PBS avec azoture de sodium à 0,02 % et glycérol à 50 % pH 7,3

L'aliquotage n'est pas nécessaire pour le stockage à -20C

*** Les 20ul contiennent 0,1% de BSA.

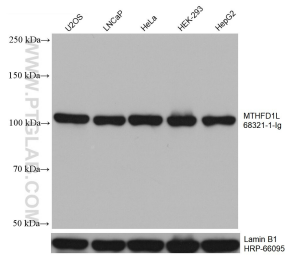
For technical support and original validation data for this product please contact:

T: 1 (888) 4PTGLAB (1-888-478-4522) (toll free in USA), or 1(312) 455-8498 (outside USA)

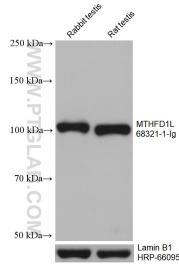
E: proteintech@ptglab.com
W: ptglab.com

This product is exclusively available under Proteintech Group brand and is not available to purchase from any other manufacturer.

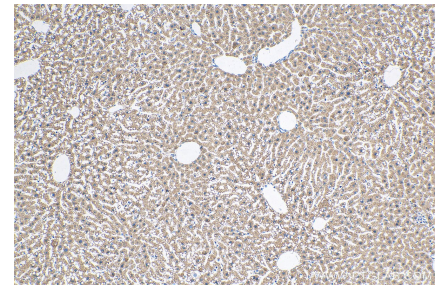
Données de validation sélectionnées



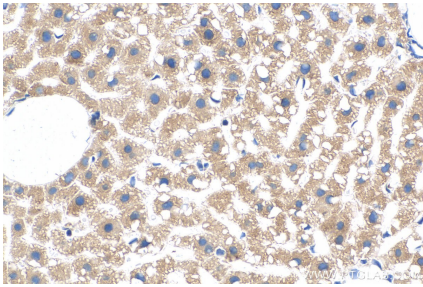
Various lysates were subjected to SDS PAGE followed by western blot with 68321-1-Ig (MTHFD1L antibody) at dilution of 1:10000 incubated at room temperature for 1.5 hours. The membrane was stripped and reblotted with HRP-conjugated Lamin B1 Monoclonal antibody (HRP-66095) as loading control.



Various lysates were subjected to SDS PAGE followed by western blot with 68321-1-Ig (MTHFD1L antibody) at dilution of 1:10000 incubated at room temperature for 1.5 hours. The membrane was stripped and reblotted with HRP-conjugated Lamin B1 Monoclonal antibody (HRP-66095) as loading control.



Immunohistochemical analysis of paraffin-embedded mouse liver tissue slide using 68321-1-Ig (MTHFD1L antibody) at dilution of 1:500 (under 10x lens). Heat mediated antigen retrieval with Tris-EDTA buffer (pH 9.0).



Immunohistochemical analysis of paraffin-embedded mouse liver tissue slide using 68321-1-Ig (MTHFD1L antibody) at dilution of 1:500 (under 40x lens). Heat mediated antigen retrieval with Tris-EDTA buffer (pH 9.0).