

À des fins de recherche uniquement

# Anticorps Monoclonal anti-EPS8L2

Numéro de catalogue: 68330-1-Ig



## Informations de base

Numéro de catalogue: 68330-1-Ig	Numéro d'acquisition GenBank: BC002474	Méthode de purification: Purification par protéine A
Taille: 150ul, Concentration: 1000 µg/ml by Nanodrop;	Identification du gène (NCBI): 64787	CloneNo.: 2E3B1
Hôte: Mouse	Nom complet: EPS8-like 2	Dilutions recommandées: WB 1:5000-1:50000 IF 1:250-1:1000
Isotype: IgG1	MW calculé: 715 aa, 81 kDa	
Immunogen Catalog Number: AG16808	MW observés: 81 kDa	

## Applications

### Applications testées:

IF, WB, ELISA

### Spécificité de l'espèce:

Humain, rat, souris

### Contrôles positifs:

WB : tissu cutané de rat, cellules A431, cellules A549, cellules HeLa, cellules HepG2, cellules LNCaP, tissu cutané de souris

IF : cellules HeLa,

## Informations générales

EPS8L2 (epidermal growth factor receptor pathway substrate 8 L2), a member of the Eps8-like protein family, is a newly identified hair bundle protein that is localized at the tips of stereocilia of both cochlear and vestibular hair cells.

## Stockage

### Stockage:

Stocker à -20°C. Stable pendant un an après l'expédition.

### Tampon de stockage:

PBS avec azoture de sodium à 0,02 % et glycérol à 50 % pH 7,3

L'aliquotage n'est pas nécessaire pour le stockage à -20C

\*\*\* Les 20ul contiennent 0,1% de BSA.

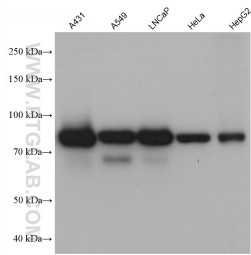
For technical support and original validation data for this product please contact:

T: 1 (888) 4PTGLAB (1-888-478-4522) (toll free  
in USA), or 1(312) 455-8498 (outside USA)

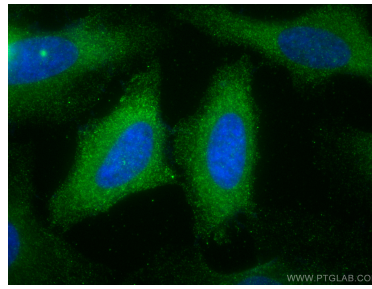
E: [proteintech@ptglab.com](mailto:proteintech@ptglab.com)  
W: [ptglab.com](http://ptglab.com)

This product is exclusively available under Proteintech Group brand and is not available to purchase from any other manufacturer.

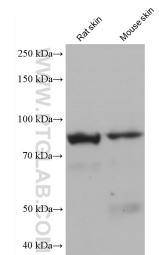
## Données de validation sélectionnées



A431 cells were subjected to SDS PAGE followed by western blot with 68330-1-Ig (EPS8L2 antibody) at dilution of 1:10000 incubated at room temperature for 1.5 hours.



Immunofluorescent analysis of (-20°C Methanol) fixed HeLa cells using EPS8L2 antibody (68330-1-Ig, Clone: 2E3B1) at dilution of 1:500 and CoraLite®488-Conjugated AffiniPure Goat Anti-Mouse IgG(H+L).



rat skin tissue were subjected to SDS PAGE followed by western blot with 68330-1-Ig (EPS8L2 antibody) at dilution of 1:10000 incubated at room temperature for 1.5 hours.