

À des fins de recherche uniquement

Anticorps Monoclonal anti-ALAS2

Numéro de catalogue: 68332-1-Ig



Informations de base

Numéro de catalogue:	68332-1-Ig	Numéro d'acquisition GenBank:	BC030230	Méthode de purification:	Purification par protéine G
Taille:	150ul , Concentration: 1000 µg/ml by Nanodrop;	Identification du gène (NCBI):	212	CloneNo.:	2C1H1
Hôte:	Mouse	Nom complet:	aminolevulinate, delta-, synthase 2	Dilutions recommandées:	WB 1:5000-1:50000
Isotype:	IgG1	MW calculé:	587 aa, 65 kDa		
Immunogen Catalog Number:	AG13524	MW observés:	60-65 kDa		

Applications

Applications testées:
WB, ELISA
Spécificité de l'espèce:
Humain

Contrôles positifs:

WB : cellules THP-1, cellules Daudi, cellules HEK-293, cellules K-562, cellules MOLT-4, cellules Raji

Informations générales

The heme biosynthetic pathway begins from delta aminolevulinic acid synthase (ALAS) catalyzing the condensation of glycine and succinyl-CoA to delta aminolevulinic acid (ALA) in the mitochondria. ALAS is coded by two genes: ALAS1 and ALAS2. ALAS1 is ubiquitously expressed in all cells, and the negative feedback is regulated by the heme pool; however, ALAS2 is specifically expressed only in erythroid cells.

Stockage

Stockage:
Stocker à -20°C. Stable pendant un an après l'expédition.
Tampon de stockage:
PBS avec azoture de sodium à 0,02 % et glycérol à 50 % pH 7,3
L'aliquotage n'est pas nécessaire pour le stockage à -20C

*** Les 20ul contiennent 0,1% de BSA.

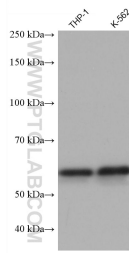
For technical support and original validation data for this product please contact:

T: 1 (888) 4PTGLAB (1-888-478-4522) (toll free in USA), or 1(312) 455-8498 (outside USA)

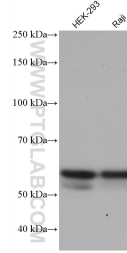
E: proteintech@ptglab.com
W: ptglab.com

This product is exclusively available under Proteintech Group brand and is not available to purchase from any other manufacturer.

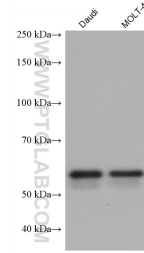
Données de validation sélectionnées



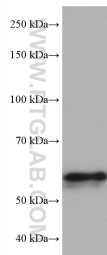
Various lysates were subjected to SDS PAGE followed by western blot with 68332-1-Ig (ALAS2 antibody) at dilution of 1:10000 incubated at room temperature for 1.5 hours.



Various lysates were subjected to SDS PAGE followed by western blot with 68332-1-Ig (ALAS2 antibody) at dilution of 1:10000 incubated at room temperature for 1.5 hours.



Various lysates were subjected to SDS PAGE followed by western blot with 68332-1-Ig (ALAS2 antibody) at dilution of 1:10000 incubated at room temperature for 1.5 hours.



NK-92 cells were subjected to SDS PAGE followed by western blot with 68332-1-Ig (ALAS2 antibody) at dilution of 1:10000 incubated at room temperature for 1.5 hours.