

À des fins de recherche uniquement

# Anticorps Monoclonal anti-MAD2L1BP



Numéro de catalogue: 68336-1-Ig

## Informations de base

Numéro de catalogue: 68336-1-Ig	Numéro d'acquisition GenBank: BC002904	Méthode de purification: Purification par protéine A
Taille: 150ul , Concentration: 1000 µg/ml by Nanodrop;	Identification du gène (NCBI): 9587	CloneNo.: 2H3H1
Hôte: Mouse	Nom complet: MAD2L1 binding protein	Dilutions recommandées: WB 1:5000-1:50000
Isotype: IgG2a	MW calculé: 34 kDa	
Immunogen Catalog Number: AG7653	MW observés: 34 kDa	

## Applications

Applications testées:  
WB, ELISA  
Spécificité de l'espèce:  
Humain

### Contrôles positifs:

WB : cellules A431, cellules HepG2, cellules Jurkat, cellules K-562, cellules MCF-7, cellules MDA-MB-231, cellules MDA-MB-468

## Informations générales

MAD2L1BP, also named as CMT2 and KIAA0110, belongs to the MAD2L1BP family. It may function to silence the spindle checkpoint and allow mitosis to proceed through anaphase by binding MAD2L1 after it has become dissociated from the MAD2L1-CDC20 complex. MAD2L1BP interacts with the spindle checkpoint and coordinates cell cycle events in late mitosis. MAD2L1BP may play an active role to remove MAD2 from p55CDC and tether MAD2 for silencing the checkpoint.

## Stockage

Stockage:  
Stocker à -20°C. Stable pendant un an après l'expédition.  
Tampon de stockage:  
PBS avec azoture de sodium à 0,02 % et glycérol à 50 % pH 7,3  
L'aliquotage n'est pas nécessaire pour le stockage à -20C

\*\*\* Les 20ul contiennent 0,1% de BSA.

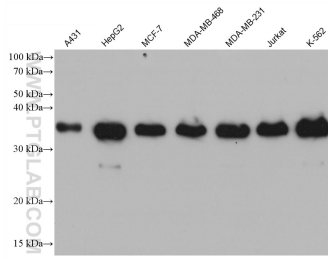
For technical support and original validation data for this product please contact:

T: 1 (888) 4PTGLAB (1-888-478-4522) (toll free in USA), or 1(312) 455-8498 (outside USA)

E: [proteintech@ptglab.com](mailto:proteintech@ptglab.com)  
W: [ptglab.com](http://ptglab.com)

This product is exclusively available under Proteintech Group brand and is not available to purchase from any other manufacturer.

## Données de validation sélectionnées



Various lysates were subjected to SDS PAGE followed by western blot with 68336-1-Ig (MAD2L1BP antibody) at dilution of 1:10000 incubated at room temperature for 1.5 hours.