

À des fins de recherche uniquement

Anticorps Monoclonal anti-AP2B1

Numéro de catalogue: 68349-1-Ig



Informations de base

Numéro de catalogue: 68349-1-Ig	Numéro d'acquisition GenBank: BC006201	Méthode de purification: Purification par protéine A
Taille: 150ul , Concentration: 500 µg/ml by Nanodrop;	Identification du gène (NCBI): 163	CloneNo.: 1A3B6
Hôte: Mouse	Nom complet: adaptor-related protein complex 2, beta 1 subunit	Dilutions recommandées: WB 1:5000-1:50000 IF 1:1000-1:4000
Isotype: IgG2a	MW calculé 105 kDa	
Immunogen Catalog Number: AG8264	MW observés: 100-115 kDa	

Applications

Applications testées:

IF, WB, ELISA

Spécificité de l'espèce:

Humain, Lapin, porc, rat, souris

Contrôles positifs:

WB : tissu de cervelet de porc, cellules HeLa, tissu de
cervelet de lapin, tissu de cervelet de rat, tissu de
cervelet de souris

IF : cellules HeLa,

Informations générales

AP2B1 is a component of the adaptor protein complex 2 (AP-2). AP complexes are cytosolic heterotetramers that mediate the sorting of membrane proteins in the secretory and endocytic pathways. AP complexes are involved in the formation of clathrin-coated vesicles (CCVs) by recruiting the scaffold protein, clathrin. AP complexes also play a pivotal role in the cargo selection by recognizing the sorting signals within the cytoplasmic tail of integral membrane proteins. AP-2 works on the plasma membrane to internalize cargo in clathrin-mediated endocytosis.

Stockage

Stockage:

Stocker à -20°C. Stable pendant un an après l'expédition.

Tampon de stockage:

PBS avec azoture de sodium à 0,02 % et glycérol à 50 % pH 7,3

L'aliquotage n'est pas nécessaire pour le stockage à -20C

*** Les 20ul contiennent 0,1% de BSA.

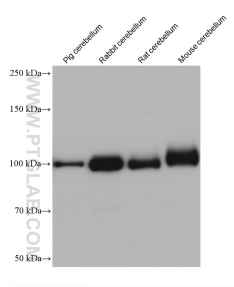
For technical support and original validation data for this product please contact:

T: 1 (888) 4PTGLAB (1-888-478-4522) (toll free
in USA), or 1(312) 455-8498 (outside USA)

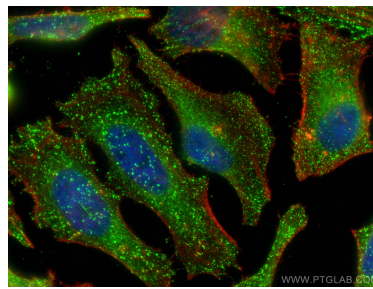
E: proteintech@ptglab.com
W: ptglab.com

This product is exclusively available under Proteintech Group brand and is not available to purchase from any other manufacturer.

Données de validation sélectionnées



Various lysates were subjected to SDS PAGE followed by western blot with 68349-1-Ig (AP2B1 antibody) at dilution of 1:10000 incubated at room temperature for 1.5 hours.



Immunofluorescent analysis of (4% PFA) fixed HeLa cells using AP2B1 antibody (68349-1-Ig, Clone: 1A3B6) at dilution of 1:2000 and CoraLite®488-Conjugated AffiniPure Goat Anti-Mouse IgG(H+L).