

À des fins de recherche uniquement

Anticorps Monoclonal anti-CRYBA2

Numéro de catalogue: 68354-1-Ig



Informations de base

| | | |
|---|---|---|
| Numéro de catalogue: 68354-1-Ig | Numéro d'acquisition GenBank: BC006285 | Méthode de purification: Purification par protéine G |
| Taille: 150ul, Concentration: 1000 µg/ml by Nanodrop; | Identification du gène (NCBI): 1412 | CloneNo.: 1G1A9 |
| Hôte: Mouse | Nom complet: crystallin, beta A2 | Dilutions recommandées: WB 1:5000-1:50000 |
| Isotype: IgG1 | MW calculé: 197 aa, 22 kDa | |
| Immunogen Catalog Number: AG8244 | MW observés: 22 kDa | |

Applications

| | |
|---|---|
| Applications testées: WB, ELISA | Contrôles positifs: WB : tissu oculaire de rat, tissu oculaire de souris |
| Spécificité de l'espèce: Humain, rat, souris | |

Informations générales

CRYBA2, also named as Beta A2 crystallin, is a member of crystallin superfamily. Mammalian lens crystallins are divided into alpha, beta, and gamma families; beta and gamma crystallins are also defined as a superfamily. Alpha and beta families are further divided into acidic and basic groups. Crystallins are the dominant structural components of the vertebrate eye lens. The MW of this protein is 22 kDa, and this antibody specially recognises the 22 kDa protein.

Stockage

Stockage:
Stocker à -20°C. Stable pendant un an après l'expédition.
Tampon de stockage:
PBS avec azoture de sodium à 0,02 % et glycérol à 50 % pH 7,3
L'aliquotage n'est pas nécessaire pour le stockage à -20C

***** Les 20ul contiennent 0,1% de BSA.**

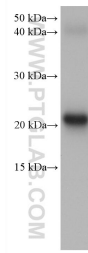
For technical support and original validation data for this product please contact:

T: 1 (888) 4PTGLAB (1-888-478-4522) (toll free
in USA), or 1(312) 455-8498 (outside USA)

E: proteintech@ptglab.com
W: ptglab.com

This product is exclusively available under Proteintech Group brand and is not available to purchase from any other manufacturer.

Données de validation sélectionnées



rat eye tissue were subjected to SDS PAGE followed by western blot with 68354-1-Ig (CRYBA2 antibody) at dilution of 1:20000 incubated at room temperature for 1.5 hours.