

À des fins de recherche uniquement

# Anticorps Monoclonal anti-RAP2A

Numéro de catalogue: 68368-1-Ig



## Informations de base

|                                                              |                                                         |                                                         |
|--------------------------------------------------------------|---------------------------------------------------------|---------------------------------------------------------|
| Numéro de catalogue:<br>68368-1-Ig                           | Numéro d'acquisition GenBank:<br>BC041333               | Méthode de purification:<br>Purification par protéine G |
| Taille:<br>150ul , Concentration: 1000 µg/ml by<br>Nanodrop; | Identification du gène (NCBI):<br>5911                  | CloneNo.:<br>1F6F3                                      |
| Hôte:<br>Mouse                                               | Nom complet:<br>RAP2A, member of RAS oncogene<br>family | Dilutions recommandées:<br>WB 1:2000-1:10000            |
| Isotype:<br>IgG1                                             | MW calculé<br>183 aa, 21 kDa                            |                                                         |
| Immunogen Catalog Number:<br>AG4979                          | MW observés:<br>21 kDa                                  |                                                         |

## Applications

Applications testées:  
WB, ELISA  
Spécificité de l'espèce:  
Humain, Lapin, porc, rat, souris

Contrôles positifs:  
WB : tissu cérébral de porc, tissu cérébral de lapin, tissu  
cérébral de rat, tissu cérébral de souris

## Informations générales

Ras-related protein Rap-2a (RAP2A) is also named as RbBP-30, and belongs to the small GTPase superfamily and Ras family. RAP2A is small GTP-binding protein which cycles between a GDP-bound inactive and a GTP-bound active form. In its active form, RAP2A can interact with and regulates several effectors including MAP4K4, MINK1 and TNIK. a Nedd4-1/Rap2A/TNIK signaling pathway regulates neurite growth and arborization in mammalian neurons (PMID:20159449). Early research indicated that RAP2A is mainly located in the Golgi apparatus of mammalian cells. RAP2A functions in several cascade signals to regulate biological behaviors such as cytoskeletal rearrangement, cell growth and apoptosis, and cell adhesion and migration (PMID:34018090, PMID:16246175, PMID: 16540189).

## Stockage

Stockage:  
Stocker à -20°C. Stable pendant un an après l'expédition.  
Tampon de stockage:  
PBS avec azoture de sodium à 0,02 % et glycérol à 50 % pH 7,3  
L'aliquotage n'est pas nécessaire pour le stockage à -20C

\*\*\* Les 20ul contiennent 0,1% de BSA.

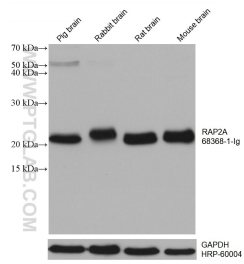
For technical support and original validation data for this product please contact:

T: 1 (888) 4PTGLAB (1-888-478-4522) (toll free  
in USA), or 1(312) 455-8498 (outside USA)

E: [proteintech@ptglab.com](mailto:proteintech@ptglab.com)  
W: [ptglab.com](http://ptglab.com)

This product is exclusively available under Proteintech Group brand and is not available to purchase from any other manufacturer.

## Données de validation sélectionnées



Various lysates were subjected to SDS PAGE followed by western blot with 68368-1-Ig (RAP2A antibody) at dilution of 1:5000 incubated at room temperature for 1.5 hours. The membrane was stripped and reblotted with HRP-conjugated GAPDH Monoclonal antibody (HRP-60004) as loading control.