

À des fins de recherche uniquement

# Anticorps Monoclonal anti-CREB3

Numéro de catalogue: 68379-1-Ig



## Informations de base

Numéro de catalogue: 68379-1-Ig	Numéro d'acquisition GenBank: BC009402	Méthode de purification: Purification par protéine G
Taille: 150ul, Concentration: 1000 µg/ml by Nanodrop;	Identification du gène (NCBI): 10488	CloneNo.: 1C12H11
Hôte: Mouse	Nom complet: cAMP responsive element binding protein 3	Dilutions recommandées: WB 1:1000-1:6000
Isotype: IgG1	MW calculé 44 kDa	
Immunogen Catalog Number: AG1823	MW observés: 40-64 kDa	

## Applications

Applications testées:  
WB, ELISA  
Spécificité de l'espèce:  
Humain

Contrôles positifs:  
WB : cellules HEK-293, cellules HCT 116, cellules  
hTERT-RPE1, cellules T-47D

## Informations générales

CREB3, also named as LZIP and Luman, belongs to the bZIP family and ATF subfamily. It is a transcription factors activated upon intramembrane proteolysis (RIP), binds the cAMP response element (CRE) (consensus: 5'-GTGACGT[AG][AG]-3'), a sequence present in many viral and cellular promoters. CREB3 binds to and requires HCFC1 as a coactivator. The activity and expression are suppressed when the HCFC1-CREB3 complex binds with CREBZF. Participates in LKN-1/CCL15-induced chemotaxis signaling. CREB3 is N-glycosylated and released by proteolysis. So the MW of CREB3 emirate 40kd to 64kd (PMID: 12138176).

## Stockage

Stockage:  
Stocker à -20°C. Stable pendant un an après l'expédition.  
Tampon de stockage:  
PBS avec azoture de sodium à 0,02 % et glycérol à 50 % pH 7,3  
L'aliquotage n'est pas nécessaire pour le stockage à -20C

\*\*\* Les 20ul contiennent 0,1% de BSA.

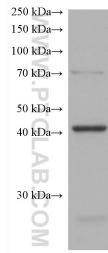
For technical support and original validation data for this product please contact:

T: 1 (888) 4PTGLAB (1-888-478-4522) (toll free  
in USA), or 1(312) 455-8498 (outside USA)

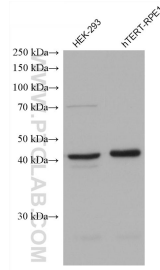
E: [proteintech@ptglab.com](mailto:proteintech@ptglab.com)  
W: [ptglab.com](http://ptglab.com)

This product is exclusively available under Proteintech Group brand and is not available to purchase from any other manufacturer.

## Données de validation sélectionnées



HCT 116 cells were subjected to SDS PAGE followed by western blot with 68379-1-Ig (CREB3 antibody) at dilution of 1:3000 incubated at room temperature for 1.5 hours.



Various lysates were subjected to SDS PAGE followed by western blot with 68379-1-Ig (CREB3 antibody) at dilution of 1:3000 incubated at room temperature for 1.5 hours.