

À des fins de recherche uniquement

Anticorps Monoclonal anti-DPP4/CD26



Numéro de catalogue: 68383-1-Ig

Informations de base

Numéro de catalogue: 68383-1-Ig	Numéro d'acquisition GenBank: BC013329	Méthode de purification: Purification par protéine G
Taille: 150ul , Concentration: 1000 µg/ml by Nanodrop;	Identification du gène (NCBI): 1803	CloneNo.: 2G6D11
Hôte: Mouse	Nom complet: dipeptidyl-peptidase 4	Dilutions recommandées: WB 1:5000-1:50000
Isotype: IgG1	MW calculé: 88 kDa	
	MW observés: 110 kDa	

Applications

Applications testées:
FC, WB, ELISA
Spécificité de l'espèce:
Humain, Lapin, porc

Contrôles positifs:

WB : tissu placentaire humain, cellules HuH-7, tissu rénal de lapin, tissu rénal de porc

Informations générales

CD26, also known as DPP4 (dipeptidyl peptidase-4), is a 110 kDa type II cell-surface glycoprotein widely expressed on T cells, activated B cells, activated NK cells and myeloid cells as well as on epithelial cells, fibroblasts, mesothelium, and endothelial cells of a variety of tissues (PMID:33777580; 26919392). It has ecto-enzyme activity in its extracellular domain and cleaves amino-terminal dipeptides with either L-proline or L-alanine at the penultimate position (PMID: 9553764). CD26 plays roles in diverse biological processes such as immunoregulation, glucose homeostasis, and tumorigenesis (PMID: 33777580).

Stockage

Stockage:
Stocker à -20°C. Stable pendant un an après l'expédition.
Tampon de stockage:
PBS avec azoture de sodium à 0,02 % et glycérol à 50 % pH 7,3
L'aliquotage n'est pas nécessaire pour le stockage à -20C

*** Les 20ul contiennent 0,1% de BSA.

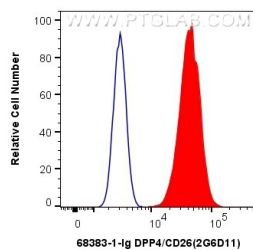
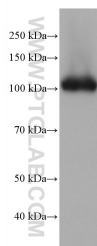
For technical support and original validation data for this product please contact:

T: 1 (888) 4PTGLAB (1-888-478-4522) (toll free
in USA), or 1(312) 455-8498 (outside USA)

E: proteintech@ptglab.com
W: ptglab.com

This product is exclusively available under Proteintech Group brand and is not available to purchase from any other manufacturer.

Données de validation sélectionnées



human placenta tissue were subjected to SDS PAGE followed by western blot with 68383-1-Ig (DPP4/CD26 antibody) at dilution of 1:10000 incubated at room temperature for 1.5 hours.

1×10^6 HuH-7 cells were surface stained with 0.4 ug Anti-Human DPP4/CD26 (68383-1-Ig, Clone:2G6D11) and Coralite®488-Conjugated AffiniPure Goat Anti-Mouse IgG(H+L) at dilution 1:1000 (red), or 0.4 ug Mouse IgG1 Isotype Control (MOPC-21) (65124-1-Ig, Clone: MOPC-21) (blue). Cells were not fixed.