

À des fins de recherche uniquement

# Anticorps Monoclonal anti-FOXC2

Numéro de catalogue: 68384-1-Ig



## Informations de base

<b>Numéro de catalogue:</b> 68384-1-Ig	<b>Numéro d'acquisition GenBank:</b> BC113437	<b>Méthode de purification:</b> Purification par protéine A
<b>Taille:</b> 150ul , Concentration: 1000 µg/ml by Nanodrop;	<b>Identification du gène (NCBI):</b> 2303	<b>CloneNo.:</b> 3E3E1
<b>Hôte:</b> Mouse	<b>Nom complet:</b> forkhead box C2 (MFH-1, mesenchyme forkhead 1)	<b>Dilutions recommandées:</b> WB 1:1000-1:6000 IHC 1:50-1:500
<b>Isotype:</b> IgG2b	<b>MW calculé</b> 501 aa, 54 kDa	
<b>Immunogen Catalog Number:</b> AG19378	<b>MW observés:</b> 56 kDa	

## Applications

### Applications testées:

IHC, WB, ELISA

### Spécificité de l'espèce:

Humain, porc, rat

**Remarque-IHC: il est suggéré de démasquer l'antigène avec un tampon de TE buffer pH 9,0; (\*) À défaut, 'le démasquage de l'antigène peut être effectué avec un tampon citrate pH 6,0.**

### Contrôles positifs:

WB : cellules hTERT-RPE1, cellules MG U-87, tissu adipeux de porc, tissu cardiaque de rat, tissu rénal de rat

IHC : tissu de cancer du sein humain,

## Informations générales

Forkhead box protein C2 (FOXC2) also known as forkhead-related protein FKHL14 (FKHL14), transcription factor FKHL14, or mesenchyme fork head protein 1 (MFH1) is a protein that in humans is encoded by the FOXC2 gene. FOXC2 is a member of the fork head box (FOX) family of transcription factors. FOX transcription factors are expressed during development and are associated with a number of cellular and developmental differentiation processes. FOXC2 is required during early development of the kidneys, including differentiation of podocytes and maturation of the glomerular basement membrane. It is also involved in the early development of the heart. FOXC2 is also involved in cancer metastases. In particular, expression of FOXC2 is induced when epithelial cells undergo an epithelial-mesenchymal transition (EMT) and become mesenchymal looking cells. (PMID: 8674414 9169153 19935708)

## Stockage

### Stockage:

Stocker à -20°C. Stable pendant un an après l'expédition.

### Tampon de stockage:

PBS avec azoture de sodium à 0,02 % et glycérol à 50 % pH 7,3

L'aliquotage n'est pas nécessaire pour le stockage à -20C

\*\*\* Les 20ul contiennent 0,1% de BSA.

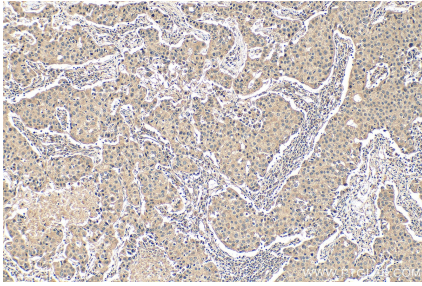
For technical support and original validation data for this product please contact:

T: 1 (888) 4PTGLAB (1-888-478-4522) (toll free in USA), or 1(312) 455-8498 (outside USA)

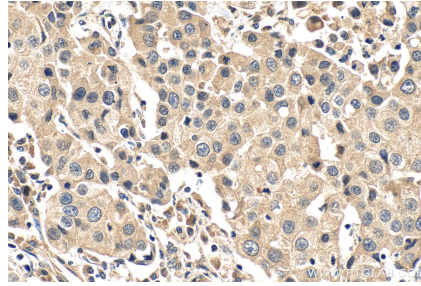
E: [proteintech@ptglab.com](mailto:proteintech@ptglab.com)  
W: [ptglab.com](http://ptglab.com)

This product is exclusively available under Proteintech Group brand and is not available to purchase from any other manufacturer.

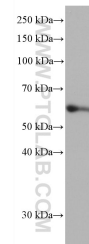
## Données de validation sélectionnées



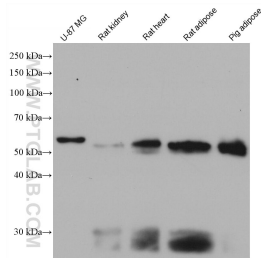
Immunohistochemical analysis of paraffin-embedded human breast cancer tissue slide using 68384-1-Ig (FOXC2 antibody) at dilution of 1:200 (under 10x lens). Heat mediated antigen retrieval with Tris-EDTA buffer (pH 9.0).



Immunohistochemical analysis of paraffin-embedded human breast cancer tissue slide using 68384-1-Ig (FOXC2 antibody) at dilution of 1:200 (under 40x lens). Heat mediated antigen retrieval with Tris-EDTA buffer (pH 9.0).



hTERT-RPE1 cells were subjected to SDS PAGE followed by western blot with 68384-1-Ig (FOXC2 antibody) at dilution of 1:3000 incubated at room temperature for 1.5 hours.



Various lysates were subjected to SDS PAGE followed by western blot with 68384-1-Ig (FOXC2 antibody) at dilution of 1:3000 incubated at room temperature for 1.5 hours.