

À des fins de recherche uniquement

Anticorps Monoclonal anti-METTL6

Numéro de catalogue: 68400-1-Ig



Informations de base

Numéro de catalogue: 68400-1-Ig	Numéro d'acquisition GenBank: BC022400	Méthode de purification: Purification par protéine A
Taille: 150ul , Concentration: 1000 µg/ml by Nanodrop;	Identification du gène (NCBI): 131965	CloneNo.: 1C7D4
Hôte: Mouse	Nom complet: methyltransferase like 6	Dilutions recommandées: WB 1:5000-1:50000 IHC 1:1000-1:4000
Isotype: IgG2b	MW calculé 255 aa, 30 kDa	
Immunogen Catalog Number: AG9714	MW observés: 30-32 kDa	

Applications

Applications testées:

IHC, WB, ELISA

Spécificité de l'espèce:

Humain

Remarque-IHC: il est suggéré de démasquer l'antigène avec un tampon de TE buffer pH 9,0; (*) À défaut, 'le démasquage de l'antigène peut être effectué avec un tampon citrate pH 6,0.

Contrôles positifs:

WB : cellules HeLa, cellules HEK-293, cellules HepG2, cellules Jurkat, cellules K-562, cellules LNCaP

IHC : tissu de cancer du sein humain, tissu de cancer du poumon humain

Informations générales

Methyltransferase-like protein 6 (METTL6) belongs to the METL family. METTL6 is as a crucial regulator of tumor cell growth, and METTL6 is a bona fide transfer RNA (tRNA) methyltransferase, catalyzing the formation of 3-methylcytidine at C32 of specific serine tRNA isoacceptors (PMID:32923617). METTL6 is a member of the RNA methyltransferase family that has been identified in many cancers. The mRNA expression levels of METTL6 were significantly upregulated in HCC tumor tissues compared to that in adjacent nontumor tissues. CRISPR/Cas9mediated knockout of METTL6 in hepatocellular carcinoma cell lines remarkably inhibited colony formation, cell proliferation, cell migration, cell invasion and cell attachment ability (PMID:34913069).

Stockage

Stockage:

Stocker à -20°C. Stable pendant un an après l'expédition.

Tampon de stockage:

PBS avec azotate de sodium à 0,02 % et glycérol à 50 % pH 7,3

L'aliquotage n'est pas nécessaire pour le stockage à -20C

*** Les 20ul contiennent 0,1% de BSA.

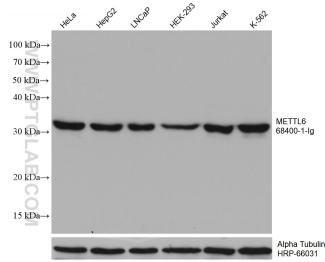
For technical support and original validation data for this product please contact:

T: 1 (888) 4PTGLAB (1-888-478-4522) (toll free
in USA), or 1(312) 455-8498 (outside USA)

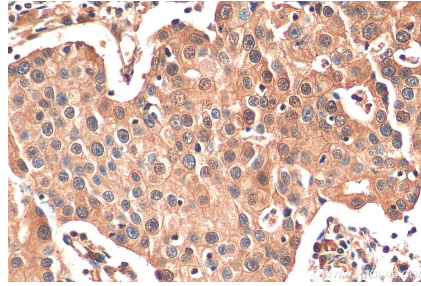
E: proteintech@ptglab.com
W: ptglab.com

This product is exclusively available under Proteintech Group brand and is not available to purchase from any other manufacturer.

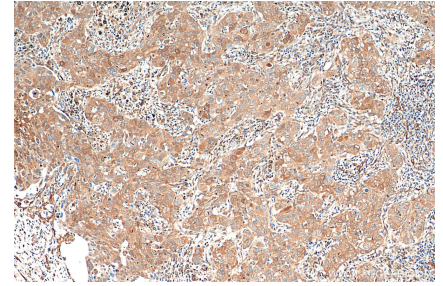
Données de validation sélectionnées



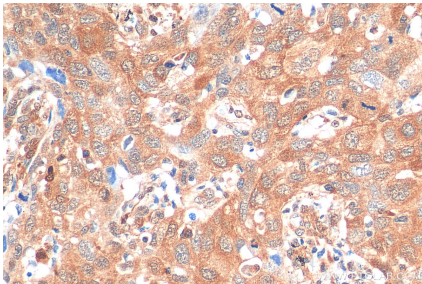
Various lysates were subjected to SDS PAGE followed by western blot with 68400-1-Ig (METTL6 antibody) at dilution of 1:20000 incubated at room temperature for 1.5 hours. The membrane was stripped and reblotted with HRP-conjugated Alpha Tubulin Monoclonal antibody (HRP-66031) as loading control.



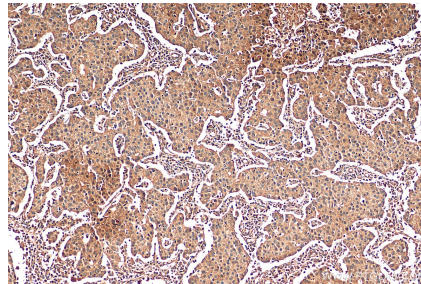
Immunohistochemical analysis of paraffin-embedded human breast cancer tissue slide using 68400-1-Ig (METTL6 antibody) at dilution of 1:2000 (under 40x lens). Heat mediated antigen retrieval with Tris-EDTA buffer (pH 9.0).



Immunohistochemical analysis of paraffin-embedded human lung cancer tissue slide using 68400-1-Ig (METTL6 antibody) at dilution of 1:2000 (under 10x lens). Heat mediated antigen retrieval with Tris-EDTA buffer (pH 9.0).



Immunohistochemical analysis of paraffin-embedded human lung cancer tissue slide using 68400-1-Ig (METTL6 antibody) at dilution of 1:2000 (under 40x lens). Heat mediated antigen retrieval with Tris-EDTA buffer (pH 9.0).



Immunohistochemical analysis of paraffin-embedded human breast cancer tissue slide using 68400-1-Ig (METTL6 antibody) at dilution of 1:2000 (under 10x lens). Heat mediated antigen retrieval with Tris-EDTA buffer (pH 9.0).