

À des fins de recherche uniquement

# Anticorps Monoclonal anti-AMOTL2

Numéro de catalogue: 68401-1-Ig



## Informations de base

|   |   |   |
|---|---|---|
| Numéro de catalogue:<br>68401-1-Ig                          | Numéro d'acquisition GenBank:<br>BC011454 | Méthode de purification:<br>Purification par protéine G         |
| Taille:<br>150ul, Concentration: 1000 µg/ml by<br>Nanodrop; | Identification du gène (NCBI):<br>51421   | CloneNo.:<br>2C4A4  |
| Hôte:<br>Mouse  | Nom complet:<br>angiomin like 2           | Dilutions recommandées:<br>WB 1:2000-1:10000<br>IF 1:500-1:2000 |
| Isotype:<br>IgG1  | MW calculé:<br>779 aa, 86 kDa             |   |
| Immunogen Catalog Number:<br>AG19971                        | MW observés:<br>100 kDa                   |   |

## Applications

Applications testées:  
IF, WB, ELISA

Spécificité de l'espèce:  
Humain

Contrôles positifs:

WB : cellules A549, cellules DU 145, cellules MDA-MB-468, cellules NCI-H1299

IF : cellules A549,

## Informations générales

Angiomin-like 2 (AMOTL2) is a member of the motin family of angiostatin-binding proteins. The motin family, also known as AMOTs, consists of three members: AMOT, AMOT-like 1 (AMOTL1) and AMOTL2. Members of the motin family are a type of adaptor proteins mainly distributed in the cytomembrane, cytoplasm or nucleus, and have a higher expression in the endothelial cells of capillaries and in larger vessels of the placenta. Human AmotL2 encodes two isoforms of a molecular mass of 100 kDa and 60 kDa. (PMID: 34036399, PMID: 25080976)

## Stockage

Stockage:  
Stocker à -20°C. Stable pendant un an après l'expédition.

Tampon de stockage:  
PBS avec azoture de sodium à 0,02 % et glycérol à 50 % pH 7,3

L'aliquotage n'est pas nécessaire pour le stockage à -20C

\*\*\* Les 20ul contiennent 0,1% de BSA.

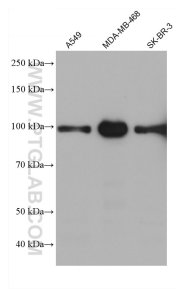
For technical support and original validation data for this product please contact:

T: 1 (888) 4PTGLAB (1-888-478-4522) (toll free  
in USA), or 1(312) 455-8498 (outside USA)

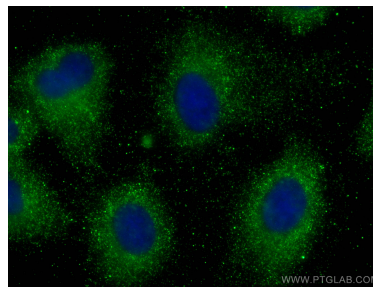
E: [proteintech@ptglab.com](mailto:proteintech@ptglab.com)  
W: [ptglab.com](http://ptglab.com)

This product is exclusively available under Proteintech Group brand and is not available to purchase from any other manufacturer.

## Données de validation sélectionnées



Various lysates were subjected to SDS PAGE followed by western blot with 68401-1-Ig (AMOTL2 antibody) at dilution of 1:5000 incubated at room temperature for 1.5 hours.



Immunofluorescent analysis of (-20°C Methanol) fixed A549 cells using AMOTL2 antibody (68401-1-Ig, Clone: 2C4A4) at dilution of 1:1000 and CoraLite®488-Conjugated AffiniPure Goat Anti-Mouse IgG(H+L).