

À des fins de recherche uniquement

Anticorps Monoclonal anti-IGFBP3

Numéro de catalogue: 68402-1-Ig



Informations de base

Numéro de catalogue: 68402-1-Ig	Numéro d'acquisition GenBank: BC000013	Méthode de purification: Précipitation de l'acide caprylique/du sulfate d'ammonium
Taille: 150ul , Concentration: 500 µg/ml by Bradford method using BSA as the standard;	Identification du gène (NCBI): 3486	CloneNo.: 1A12A11
Hôte: Mouse	Nom complet: insulin-like growth factor binding protein 3	Dilutions recommandées: WB 1:2000-1:10000 IHC 1:250-1:1000
Isotype: IgM	MW calculé 32 kDa	
Immunogen Catalog Number: AG20351	MW observés: 39-45 kDa	

Applications

Applications testées: IHC, WB, ELISA	Contrôles positifs:
Spécificité de l'espèce: Humain	WB : cellules A549, cellules Caco-2, tissu placentaire humain
Remarque-IHC: il est suggéré de démasquer l'antigène avec un tampon de TE buffer pH 9,0; (*) À défaut, le démasquage de l'antigène peut être effectué avec un tampon citrate pH 6,0.	IHC : tissu placentaire humain,

Informations générales

Insulin-like growth factor binding protein-3 (IGFBP-3) contains a 27 amino acid putative signal sequence followed by a mature protein of 264 amino acids with 18 cysteine residues clustered near the N- and C-terminus. Accordingly, expression of the cloned IGFBP-3 cDNA in mammalian tissue culture cells results in secretion of the protein into the culture medium. IGFBP-3 shares high homology (33% amino acid identity) including conservation of all 18 cysteine residues with a smaller human IGF-binding protein (BP-28) identified in amniotic fluid. IGFBP-3 has one or more glycosylation sites with a protein core of 30 kDa. Western blots revealed that the 39-45 kDa IGFBP-3 fragment is a glycoprotein. (PMID: 23403918, PMID: 24926947, PMID: 19887447)

Stockage

Stockage:
Stocker à -20°C. Stable pendant un an après l'expédition.
Tampon de stockage:
PBS avec azoture de sodium à 0,02 % et glycérol à 50 % pH 7,3
L'aliquotage n'est pas nécessaire pour le stockage à -20C

*** Les 20ul contiennent 0,1% de BSA.

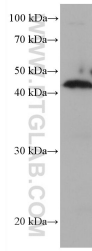
For technical support and original validation data for this product please contact:

T: 1 (888) 4PTGLAB (1-888-478-4522) (toll free in USA), or 1(312) 455-8498 (outside USA)

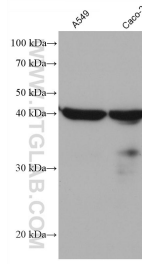
E: proteintech@ptglab.com
W: ptglab.com

This product is exclusively available under Proteintech Group brand and is not available to purchase from any other manufacturer.

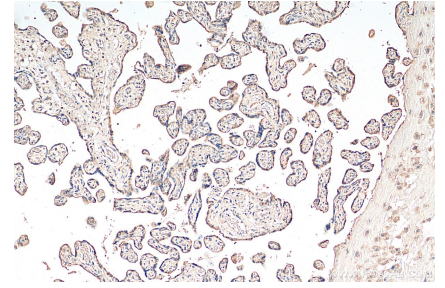
Données de validation sélectionnées



human placenta tissue were subjected to SDS PAGE followed by western blot with 68402-1-Ig (IGFBP3 antibody) at dilution of 1:5000 incubated at room temperature for 1.5 hours.



Various lysates were subjected to SDS PAGE followed by western blot with 68402-1-Ig (IGFBP3 antibody) at dilution of 1:5000 incubated at room temperature for 1.5 hours.



Immunohistochemical analysis of paraffin-embedded human placenta tissue slide using 68402-1-Ig (IGFBP3 antibody) at dilution of 1:500 (under 10x lens). Heat mediated antigen retrieval with Tris-EDTA buffer (pH 9.0).